

## How to Use NVR 2.2

### Contents

---

- Introduction
- PART 1 – NVR Login Settings
- PART 2 – Camera Group and Channel Setup
- PART 3 – Live Preview
- PART 4 –Storage and Recording
- PART 5 – PTZ Setup
- PART 6 – e-Map
- PART 7 – Event Management
- PART 8 – Video Search and Playback
- PART 9 – Video Export
- PART 10 – Remote Access via Web Browser

### Introduction

---

ACTi Network Video Recorder NVR 2.2 is multi-functional software that in addition to video recording can perform hundreds of different security surveillance related operations.

Among the functions, there are playback, video export, e-Map, preview tour, user management, channel management, event management, storage management, remote access and much more.



To let the user understand these functions easily, the series of video clips have been created and published in YouTube account:

[www.youtube.com/actiproducts](http://www.youtube.com/actiproducts)

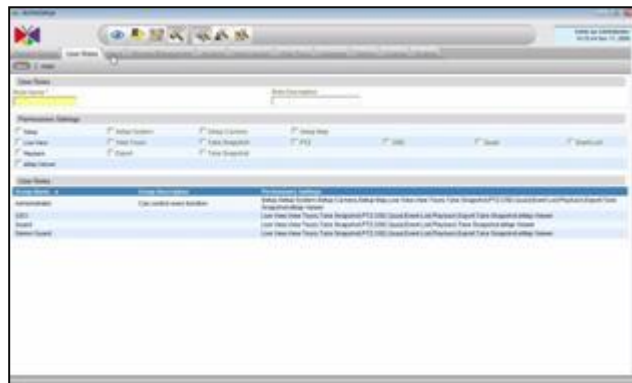
It is recommended to view those video clips in highest possible resolution mode – HD (720p). The following chapters of this document give the direct link to each video file together with brief description of their content.

## **PART 1 - NVR Login Settings**

### **1-1 Add User Roles and Users**

The NVR management starts from defining how the NVR is to be used and by whom.

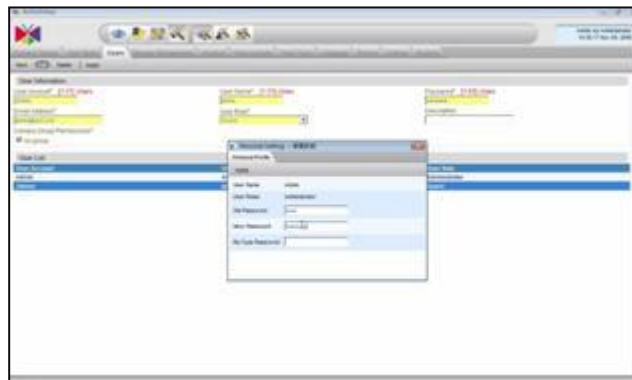
[Download Video](#)



### **1-2 Change Password**

Once you have created the users who are allowed to access NVR, you might want to give them the option to change the password.

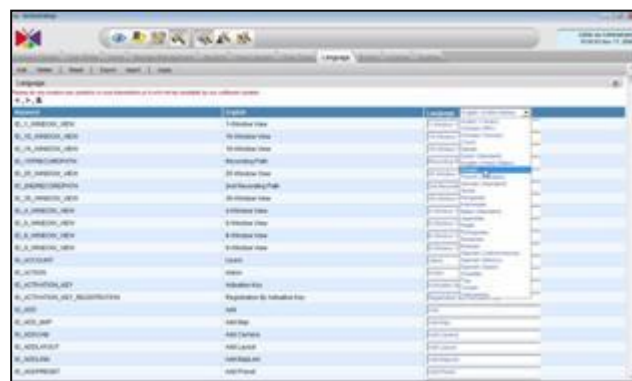
[Download Video](#)



### **1-3 Language Settings**

NVR supports multiple languages for user interface. You can choose the language right before logging into the system. You can also add new languages in NVR.

[Download Video](#)



### 1-4 Auto Login to NVR

For the convenience of the user, it is possible to set auto-login mode for NVR. When clicked at NVR Active Monitor, it will run instantly without requesting the ID and the password.

[Download Video](#)

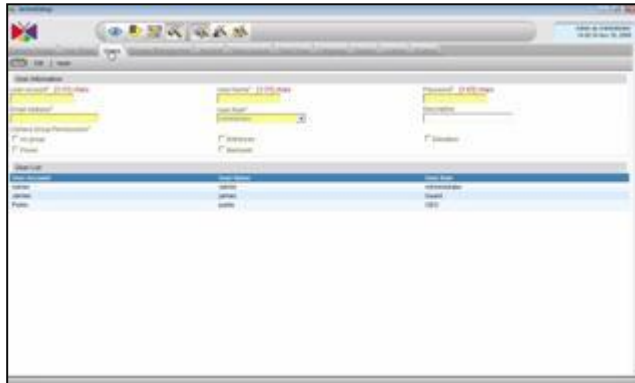


## PART 2 - Camera Group and Channel Setup

### 2-1 Create Camera Groups

There are two main reasons to group the cameras in NVR: 1) a convenient permission mapping of cameras and users; 2) defining which cameras will belong to a certain eMap layout.

[Download Video](#)



### 2-2 Add Channels

There are several ways to add camera settings into NVR. Each of the added cameras will have an ID in NVR camera list. That ID is referred to as a channel.

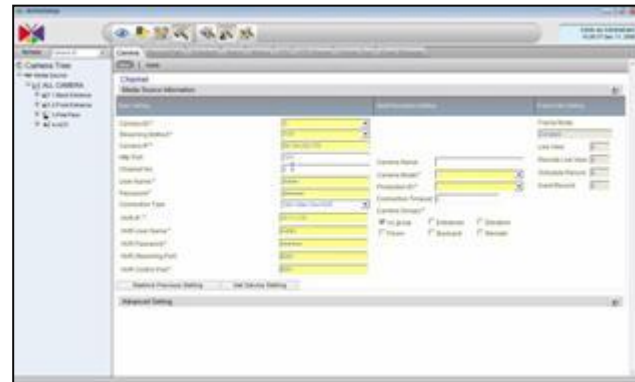
[Download Video](#)



### 2-3 Add Remote Channels

In addition to channels from the same local area network it is also possible to add channels of the cameras over WAN.

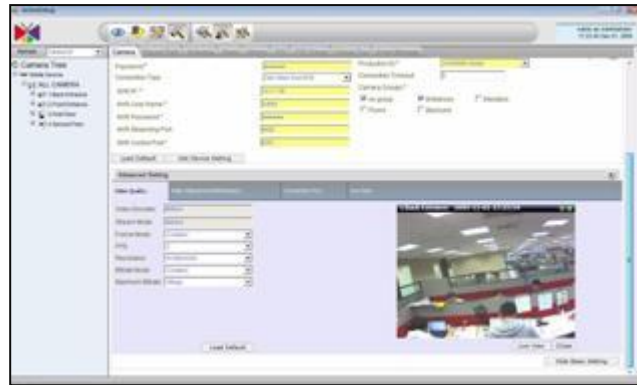
[Download Video](#)



## 2-4 Channel Settings

Once a channel has been added to NVR, it is possible to adjust the camera settings through the Active Setup of NVR. Alternatively, you can use camera's Web Configurator to carry out similar tasks.

[Download Video](#)

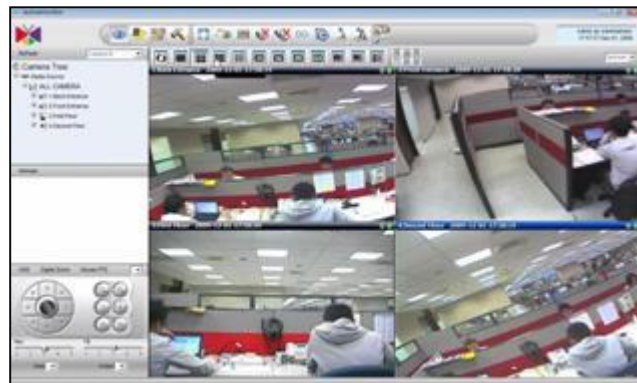


## PART 3 - Live Preview

### 3-1 Preview Testing

When the channels have already been added and configured properly, you can open Active Monitor and try out how the live preview works.

[Download Video](#)



### 3-2 Layout Setup

Depending on the amount of channels and the viewing requirements, it is possible to use different channel layouts in Active Monitor.

[Download Video](#)



### 3-3 Layout Switch

If you have set several layouts in NVR, you can switch between them manually, or simply use the NVR's auto-switch function.

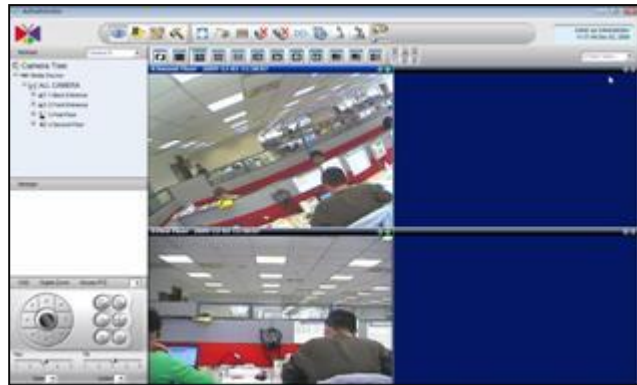
[Download Video](#)



### 3-4 Default Layout

Default layout is the pre-defined view that is loaded automatically each time when the Active Monitor is started, providing that the NVR is in auto-login mode.

[Download Video](#)

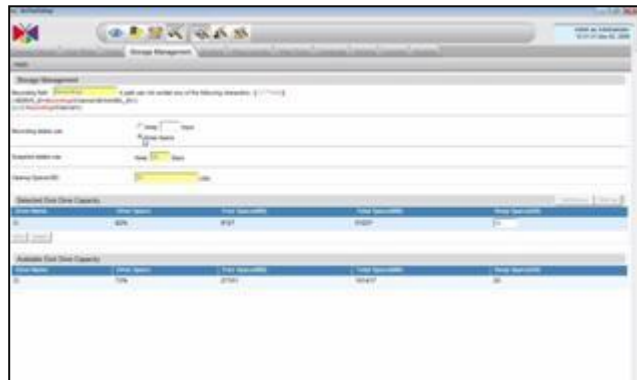


## PART 4 – Storage and Recording

### 4-1 Storage Management

The storage management allows you to choose which hard drives will be used for storing videos and snapshots. It also allows to set limits to recording space and allows to set deleting rules.

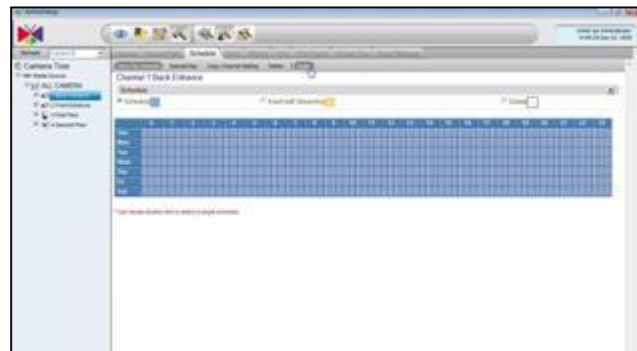
[Download Video](#)



### 4-2 Recording Setup

You can decide the recording schedule for each channel – either a scheduled or an event recording (for storage saving).

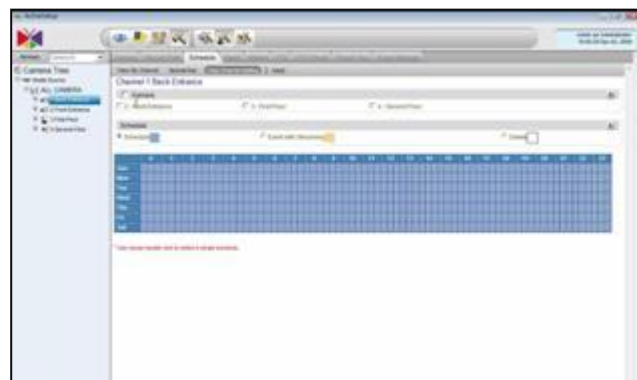
[Download Video](#)



### 4-3 Copy Recording Schedule

If you have many channels with similar recording schedules then you can use a convenient function of copying the recording schedule to apply the settings to all the channels.

[Download Video](#)



#### 4-4 Manual Recording

Manual recording is used in situations where the NVR is not recording automatically (no schedule, no event). The guard can press the manual recording button when something suspicious shows up on the screen of the Active Monitor.

[Download Video](#)

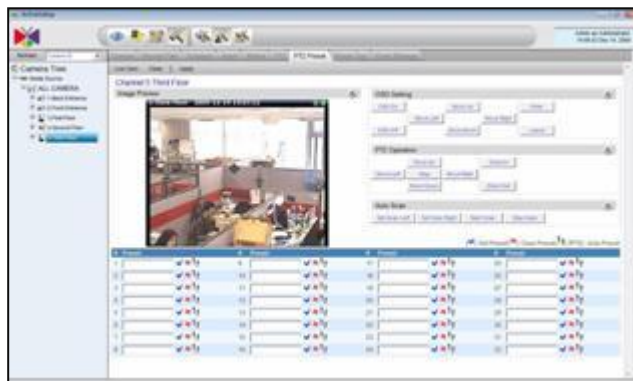


## PART 5 - PTZ Setup

#### 5-1 PTZ Setup

If you have a PTZ camera then you might want to configure PTZ related functions such as PTZ control protocol or the list of PTZ commands.

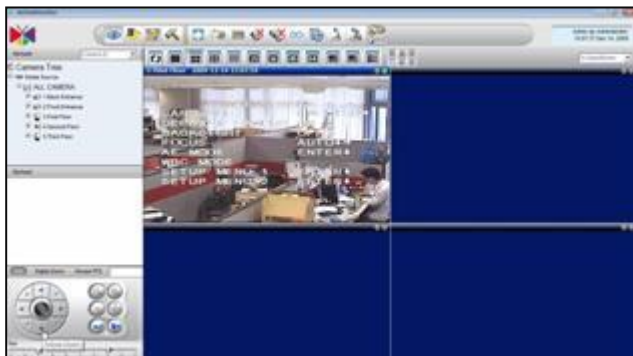
[Download Video](#)



#### 5-2 OSD Settings

On-Screen Display (OSD) shows the settings of analog camera modules right on the video display. It is possible to adjust the device settings right through the OSD, similar to home TV sets.

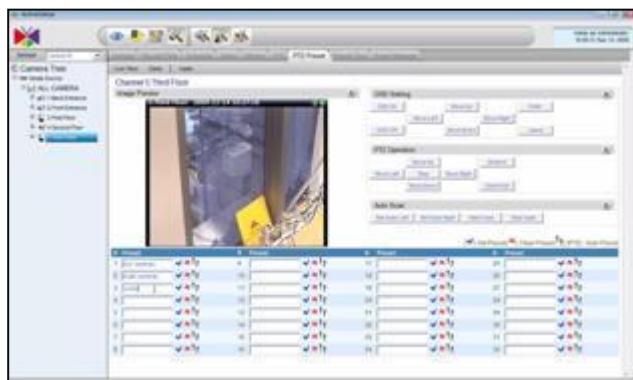
[Download Video](#)



#### 5-3 Preset Setup

It is possible to define 32 PTZ preset points for each PTZ camera. This way it is much easier to go to the most often used positions of the camera.

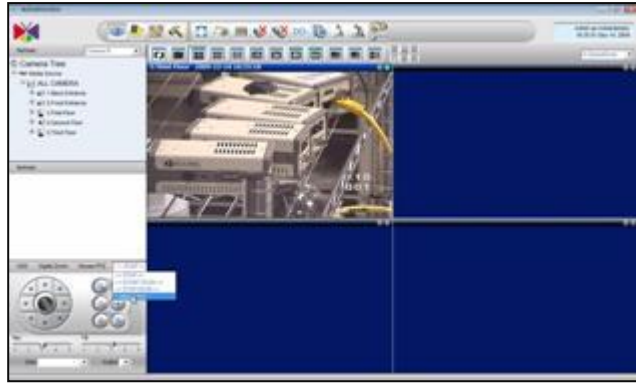
[Download Video](#)



#### 5-4 Tour Setup

PTZ Tour combines several preset points and switches between them automatically based on a certain time interval.

[Download Video](#)



#### 5-5 PTZ Live View

Once the PTZ camera has been fully configured, all its functions can be used through Active Monitor.

[Download Video](#)



### PART 6 – eMap

#### 6-1 eMap Setup and Preview

eMap gives a nice visual overview of the camera site. It is combined with small previews of each channel. Each eMap is linked to a certain camera group.

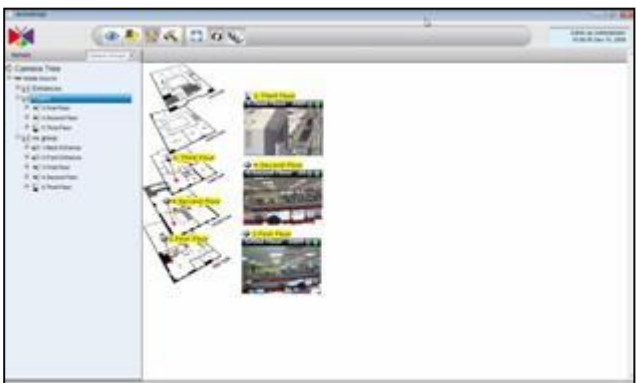
[Download Video](#)



#### 6-2 eMap Tour Setup

If you have more than one eMap, you can set up a tour that switches the maps automatically based on a certain time interval.

[Download Video](#)



## PART 7 – Event Management

### 7-1 Motion Detection and Response

The ACTi cameras are able to detect motion and notify the NVR accordingly. In Active Setup you can decide how NVR should respond to those motion detection triggered events.

[Download Video](#)



### 7-2 Digital Input

Digital Input is the pair of pins in the camera's terminal block through which it is possible to connect an external device (a switch or some kind of sensor) with the camera, allowing the external device to notify the camera about an activity in camera site. You can decide how NVR should respond to the Digital Input triggered events.

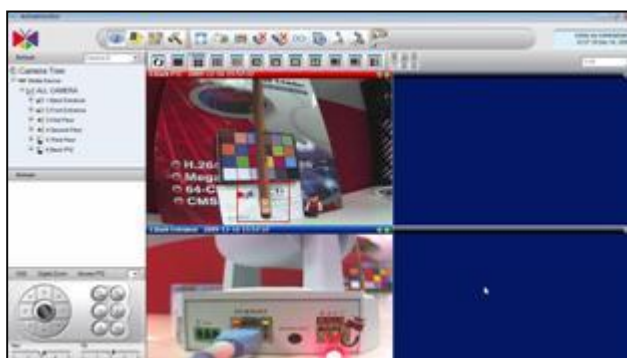
[Download Video](#)



### 7-3 Digital Output

Digital Output is a pair of pins in the camera's terminal block through which it is possible to connect an external device with the camera. That external device can be activated by the camera upon an event inside the camera or by the command from the control center. You can decide how NVR should activate the Digital Output devices.

[Download Video](#)

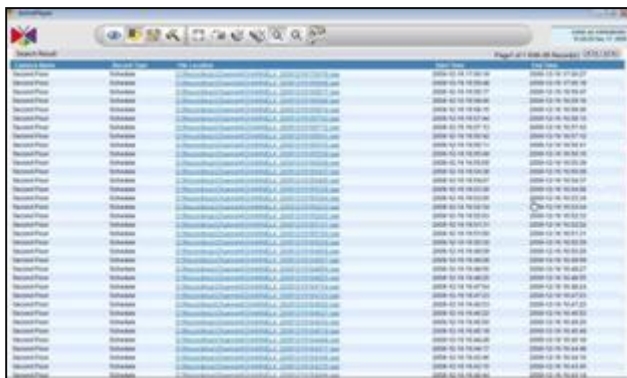


## PART 8 – Video Search and Playback

### 8-1 Video File Search and Playback

All the recorded videos are saved as video files. Each file size may vary between 30 seconds to 1 hour, depending on the NVR settings. Each of those files can easily be found by video search, followed by the playback.

[Download Video](#)



### 8-2 Time-Bar Search and Playback

In addition to file based search, you can also use the time-bar search – just click on the timeline in Active Player to skip to a certain point in time scale.

[Download Video](#)



### 8-3 Open File and Playback

If you are using the Workstation running on the NVR computer itself, you can find the files for playback simply by browsing the folders of that PC.

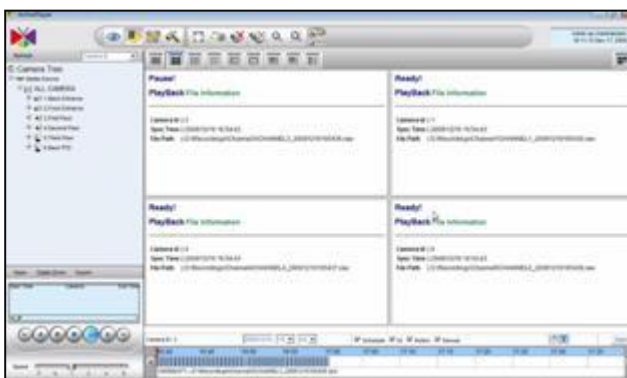
[Download Video](#)



### 8-4 Synchronized Playback

While using Active Player you can pick any of the video clips and let the other 3 channels of the 4-channel layout do the synchronized playback together with the original reference video.

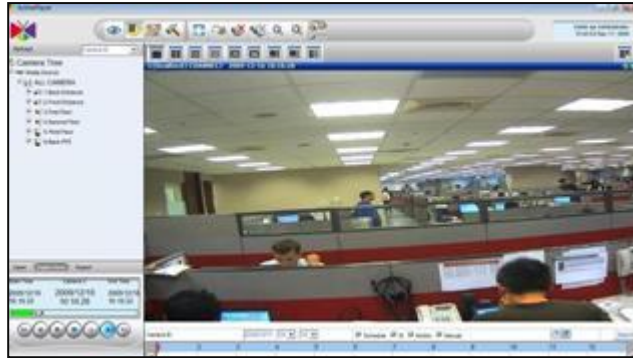
[Download Video](#)



### 8-5 Digital Zoom during Playback

If the resolution of the recorded video is bigger than the size of the playback display area then you can make good use of the digital zoom to show the details of the video.

[Download Video](#)



### 8-6 Snapshot Setup and Search

In addition to video management, the NVR can also manage snapshots – how they are generated, where they are stored and how they can be found.

[Download Video](#)



## PART 9 – Video Export

### 9-1 Video Export as RAW or AVI

When the video evidence is needed for the purpose of criminal investigation or for other purposes, the video clips can be exported from the NVR system as RAW or AVI files.

[Download Video](#)



## PART 10 – Remote Access via Web Browser

### 10-1 IIS Settings

Before using IE based Web Client, the Internet Information Services have to be configured properly on NVR server side.

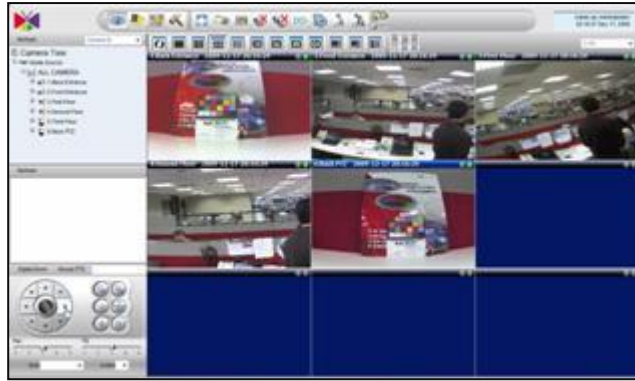
[Download Video](#)



### 10-2 Remote Preview

Web Client can do the live preview just like Workstation – you can use layouts, control PTZ camera, etc.

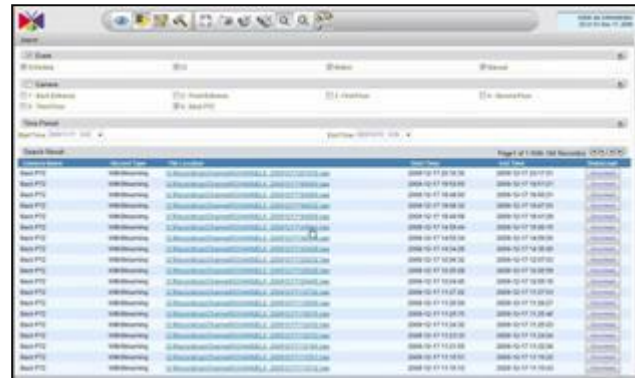
[Download Video](#)



### 10-3 Remote Playback

If your IIS settings have been configured properly, you will be able to download the video files from the NVR into the remote computer and then do the local playback there. You can also request playback stream directly from NVR without saving it locally.

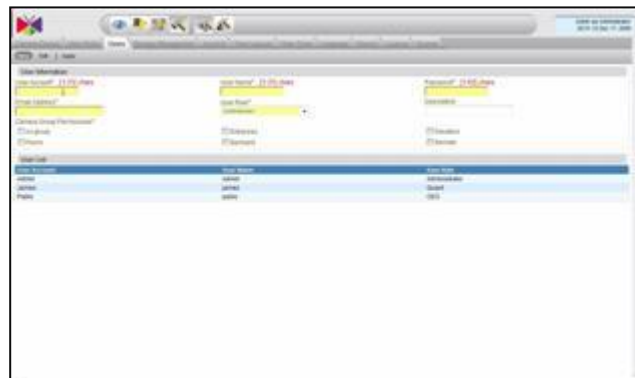
[Download Video](#)



### 10-4 Remote Setup

Although Web Client's main function is to do live preview and playback, it also offers all the main setup functions of NVR.

[Download Video](#)



### 10-5 Remote eMap

It is possible to use eMap mode for live preview even through Web Client. For eMap setup, however, you need to use NVR Workstation.

[Download Video](#)

