



# **Standalone NVR Finder User's Manual**

**Version 1.0.03**

2011/5/18



# Table of Contents

<b>1 Overview</b>	<b>3</b>
<hr/>	
Introduction.....	3
System Requirements.....	3
<b>2 Startup</b>	<b>4</b>
<hr/>	
Start Searching .....	4
Connect to Standalone NVRs.....	5
Through Internet Explorer .....	5
If Your Default Browser Is Not Internet Explorer.....	5

## Figure List

Fig. 1	Standalone NVR Finder in the same Subnet with Standalone NVRs .....	3
Fig. 2	Search Result .....	4
Fig. 3	Refresh .....	4
Fig. 4	Connect to Standalone NVR Login Page through IE.....	5

# Overview

## Introduction

---

After connecting to the network, ACTi standalone NVR will first try to get an IP address assigned by network router / DHCP server. If your network does not assign IP address automatically, then Ethernet Port 1 will assume IP address 192.168.0.10 while Ethernet Port 2 will use IP address 192.168.1.10.

To find the IP addresses assigned by your network router / DHCP server to ACTi standalone NVRs, you can

1. Make use of the UPnP function provided by Windows PC:  
 ACTi standalone NVRs support UPnP connection. This means that once the device has an IP address, you will be able to find it in the local network in Windows Explorer → Network. Double Click the icon to log into Standalone NVR.
2. **Standalone NVR Finder:**  
 Standalone NVR Finder is a Windows based utility to help users find ACTi standalone NVRs in the same network quickly and easily. There is no need to execute an installation before using it. Each of the Ethernet adapters in ACTi standalone NVR can be found and connected directly through IE browser.

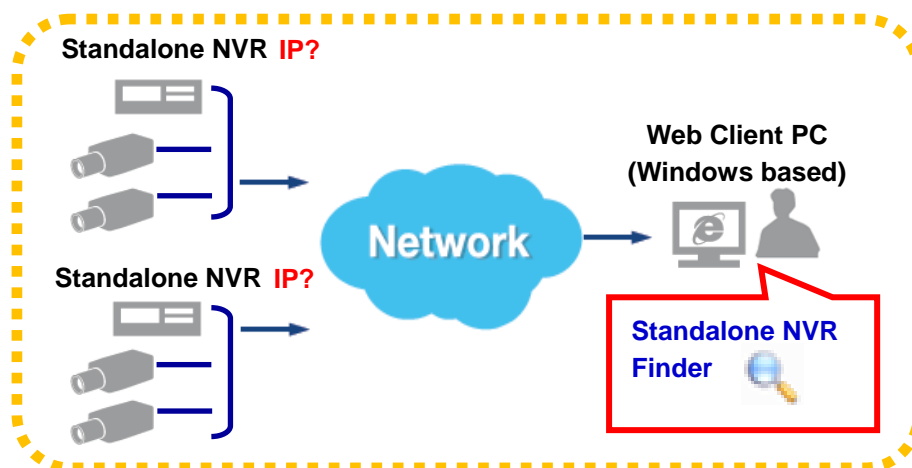



Fig. 1 Standalone NVR Finder in the same Subnet with Standalone NVRs

## System Requirements

Operating system: Windows XP or newer  
 Web Browser: Internet Explorer 7 or newer

# Startup

## Start Searching

1. Double-click on the application  to start the utility.
2. In the left column will list all the IP addresses supported by network adapters in your computer, select an IP address.
3. The standalone NVRs existing within the same network will be found and displayed in the right column.

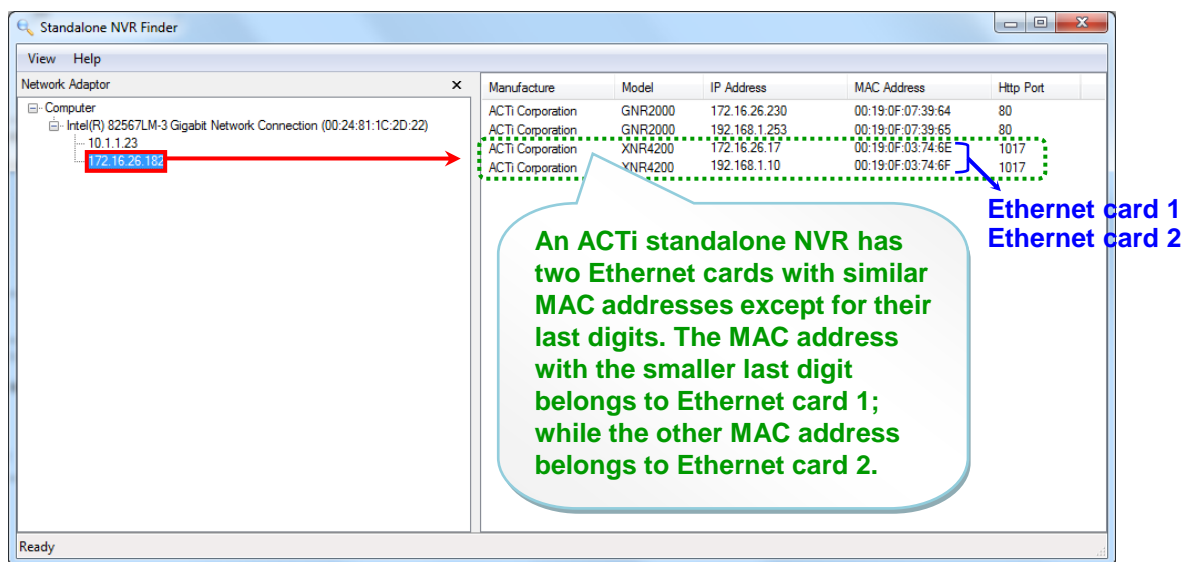


Fig. 2 Search Result

4. To refresh the search result, in the right column, right-click your mouse and select “Refresh” from the pop-up menu.

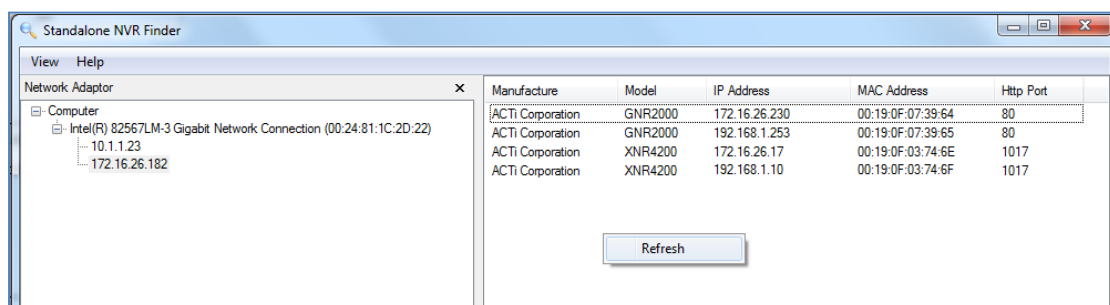


Fig. 3 Refresh

## Connect to Standalone NVRs

### Through Internet Explorer

On the standalone NVR list, double click on the device name (e.g. XNR4200 or GNR2000) to connect to the standalone NVR login page through Internet Explorer browser.

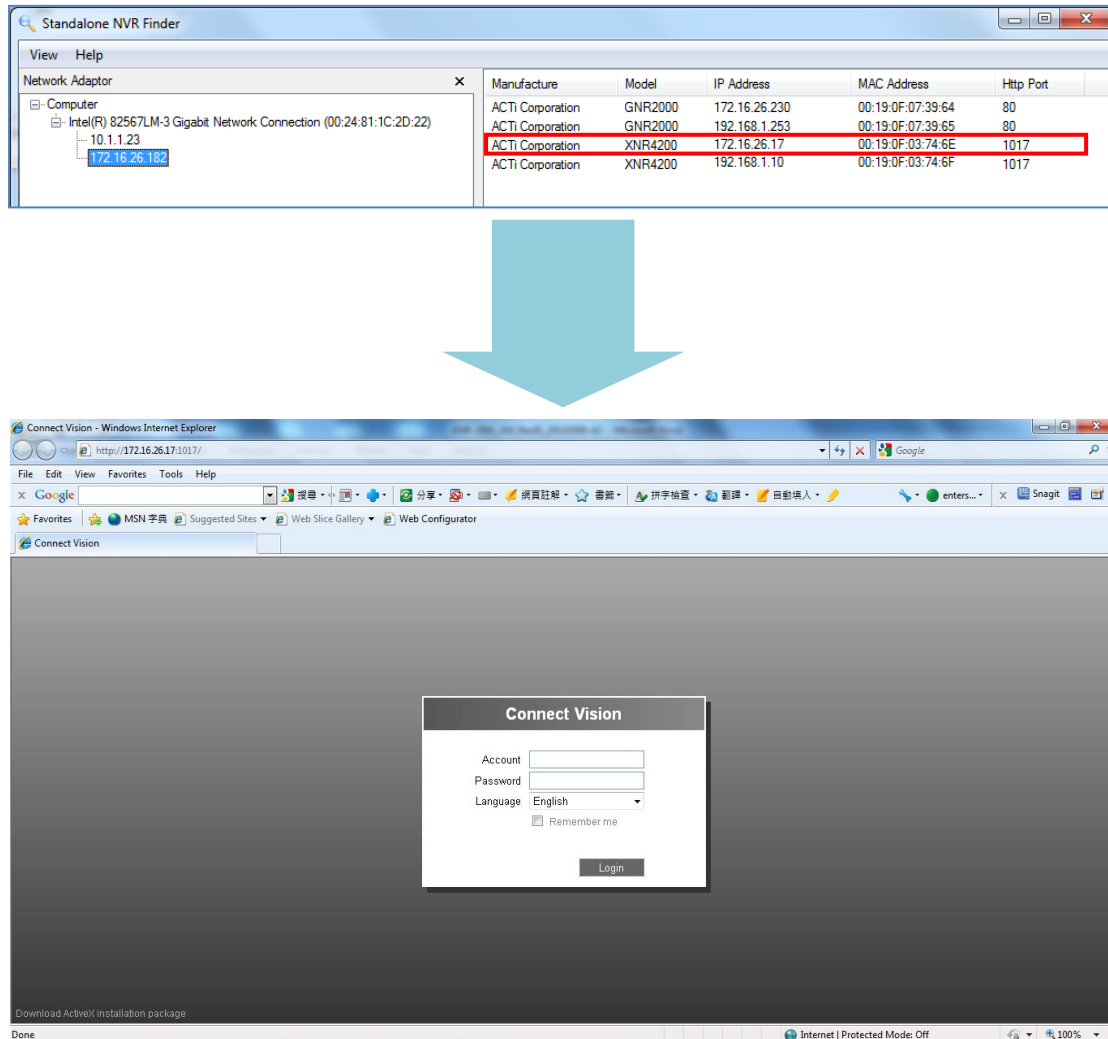


Fig. 4 Connect to Standalone NVR Login Page through IE

### If Your Default Browser Is Not Internet Explorer

Input the IP address and port number found by Standalone NVR Finder in Internet Explorer 7 (or newer version) to log in.