



# Media Converter

## V2.1.21

### User's Manual

2011/06/24



# Step 1. Select Format to convert

Media Converter can convert between four formats.

## Convert RAW file to AVI file

When you select this format, you can choose whether you want to use JPEG payload or not. Without using JPEG payload, you will not add OSD on the video and must have FFdshow to play the converted file.

## Convert RAW file to Multiple JPG file

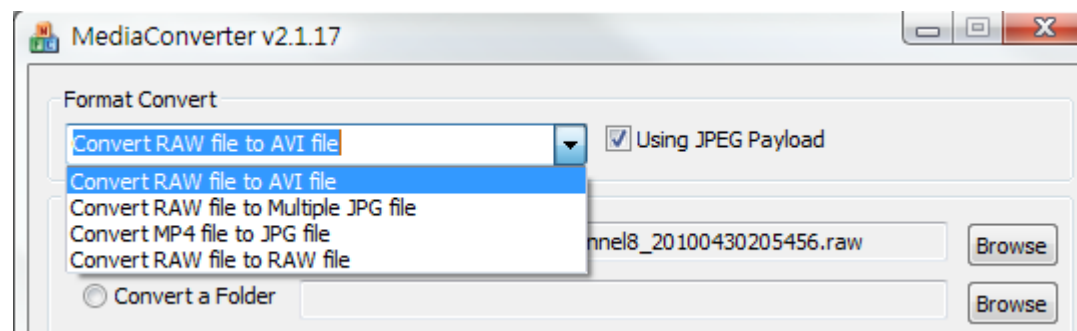
This will convert every frame of the selected time period from the RAW file into a separate JPEG file. Be careful when you use this function, as you will get quite a lot of JPG files if you've selected too long a time to convert.

## Convert to RAW file

This is usually used in conjunction with the "Select a period of time" feature. This will cut out a segment of video within the original long video, which will be easier for transfer and more appropriate as evidence.

## Convert MP4 file to JPG file

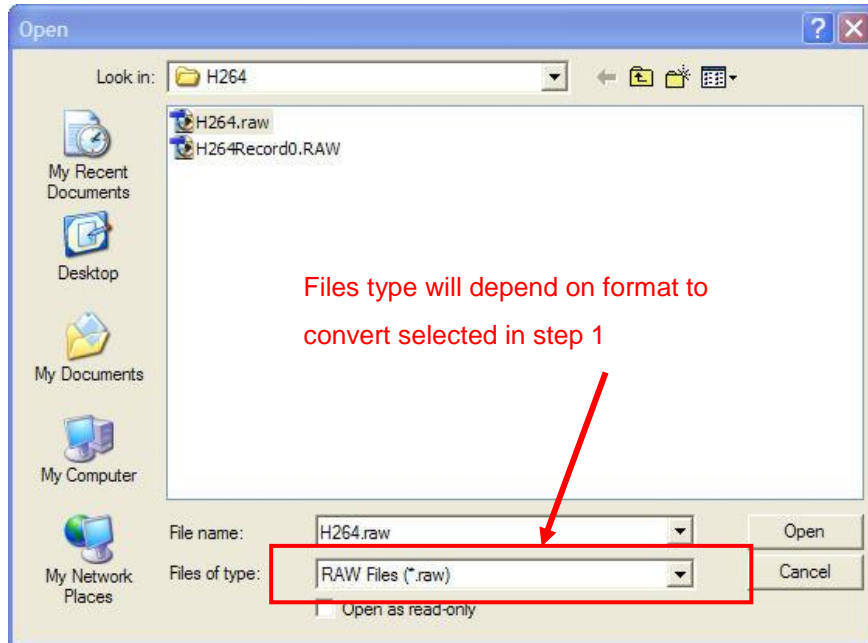
This is similar to converting RAW files to JPG files. The only difference is the source file type.



## Step2. Select File Source

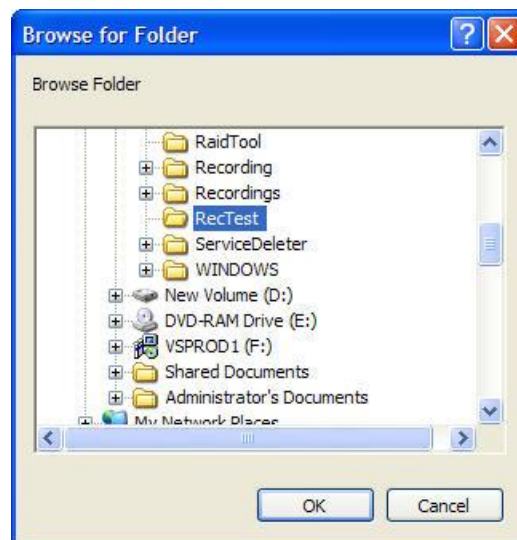
### Convert single file

Browse and select a single file.



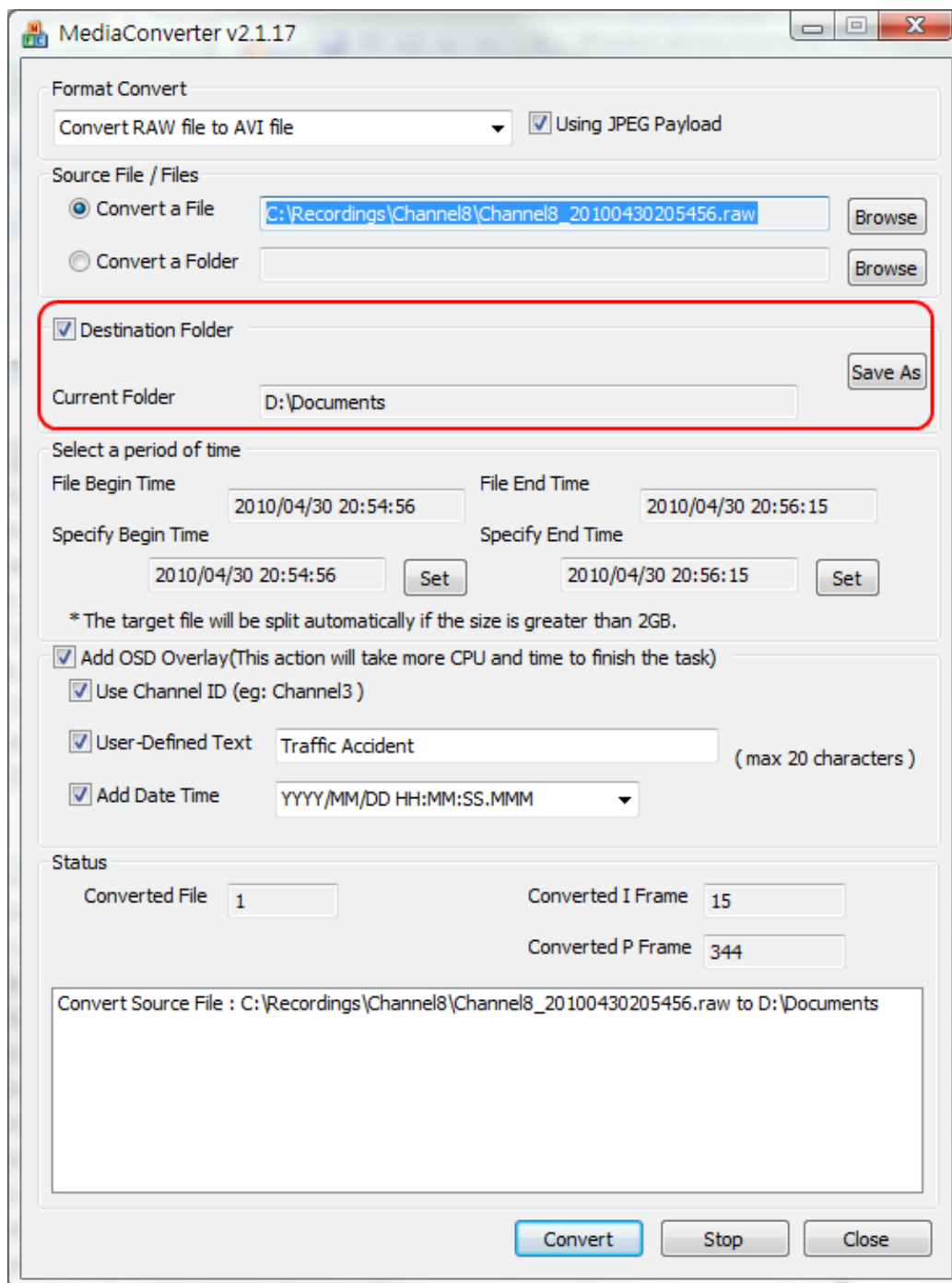
### Convert all files in selected folder

Browse and select a folder. All files within that folder will be converted.



## Step3 Choose Destination Folder

The converted files will by default be saved to the source folder. If you need to save the converted file into another folder, please check the box of **"Destination Folder"** to select a destination folder and click "Save As" button to browse to your target folder.

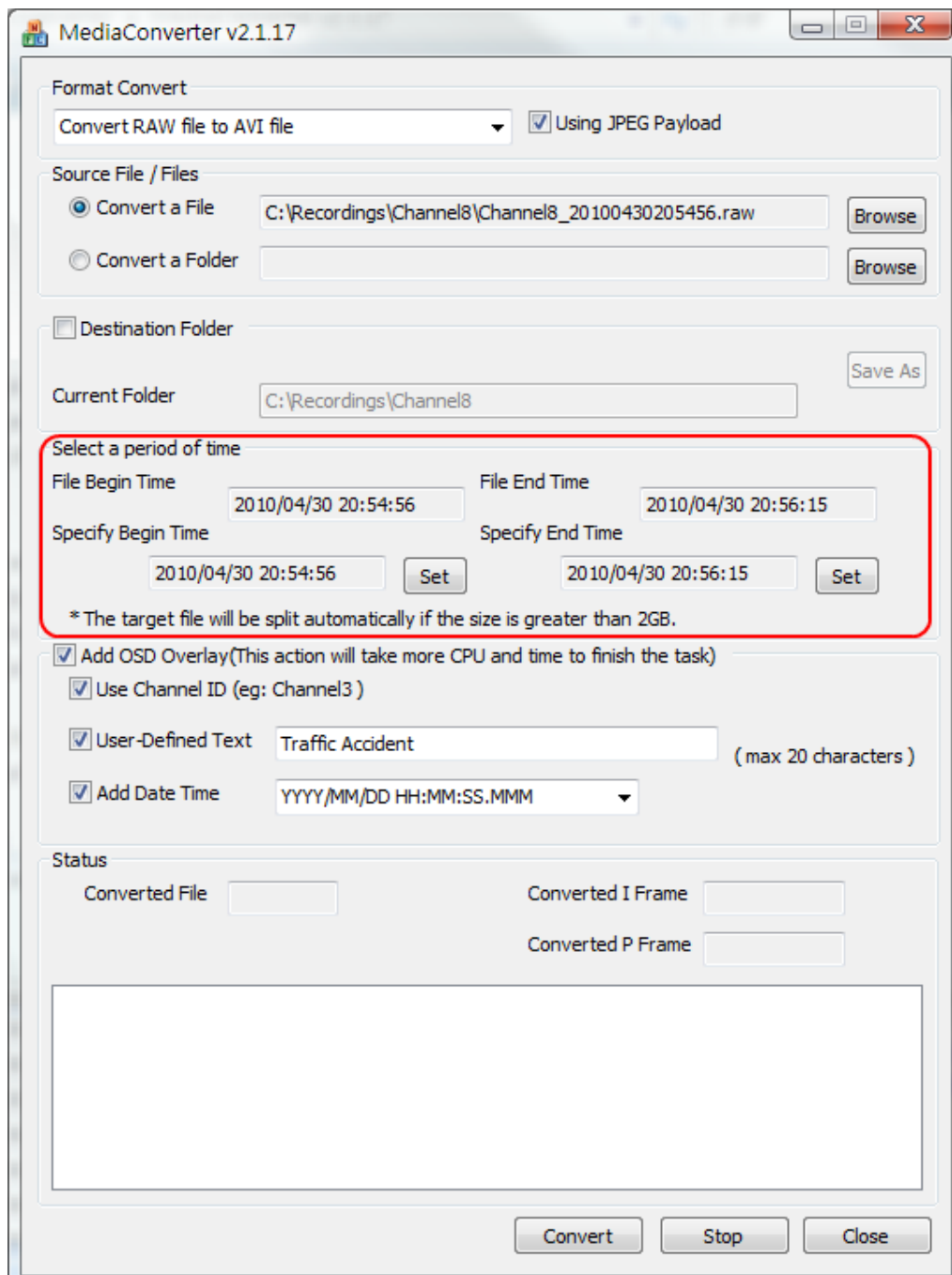


## Step 4. Select a period of time

You may select a begin time and end time to retrieve only part of a recording file.

Click the "Set" buttons to specify begin time and end time. A shorter video will be trimmed out of the original long video file.

**Notice:** The target file will be split automatically if the size is greater than 2GB.



## Step 5. Add OSD

The process adds text to the original video file. You may included channel ID, user-defined text, date and time. This function is NOT available when converting RAW to RAW, as we do not allow RAW files to be edited other than to trim it short. This is to preserve the authenticity of the evidence.

### Add OSD Overlay

If you want to add OSD on video frames, click the check box "Add OSD Overlay".

**Notice:** This action takes more CPU and time to finish the task.

### Use Channel ID

If you need to know where the converted files come from, you can add Channel ID on the overlay of playback file. Click the "Use Channel ID" box to add into.

**Notice:** We do not recommend you to change your recording file name.

### Add User-Defined Text

If need to add text, please select the "User-Defined Text" check box and fill in the text you need in the space e.g. Traffic Accident

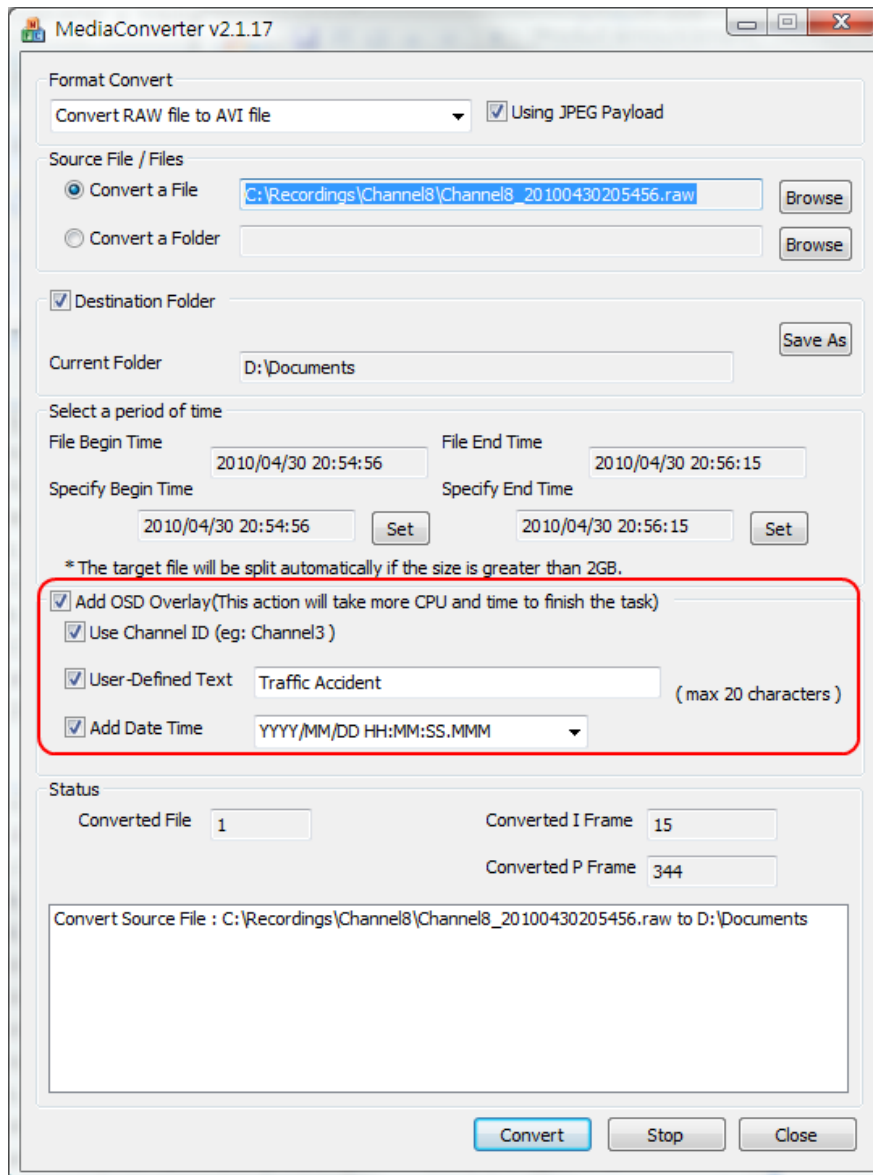
**Notice:** The maximum number of characters you can fill in the space is 20 chars.

### Add Date Time

Select the "Add Date Time" check box to add date time into the overlay of file. There are three time format you can choose.

1. Date Time format 1: YYYY/MM/DD HH:MM:SS:MMM (eg: 2008-12-20 13:20:47:123).
2. Date Time format 2: MM/DD/YYYY HH:MM:SS:MMM (eg: 12-20-2008 13:20:47:123).
3. Date Time format 3: DD/MM/YYYY HH:MM:SS:MMM (eg: 20-12-2008 13:20:47:123).

## Adding OSD Overlay



## Result from adding Overlay onto the video.



## Step 6. Start Conversion

Click “Convert” button to start the file conversion process. If you need to interrupt the conversion process, please click the stop button.

The Status section will show the progress and video information.

1. Show how many files are converted.
2. Show how many I Frames are converted when converting RAW file.
3. Show how many P Frames are converted when converting RAW file.
4. Information about conversion results.

