



ACTi Camera Demo Tool User Manual

Version 1.3

05/25/2011



Table of Contents

| | |
|---------------------------|-----------|
| 1 Overview | 4 |
| <hr/> | |
| Introduction..... | 4 |
| Main Specification..... | 4 |
| System Requirements..... | 4 |
| Installation..... | 4 |
| System Startup..... | 5 |
| 2 Configuration | 6 |
| <hr/> | |
| Lenovo X200/HP HDX16..... | 7 |
| Advanced Setting..... | 8 |
| HP ProBook..... | 9 |
| Advanced Setting..... | 10 |
| Customization..... | 11 |
| Advanced Setting..... | 12 |
| 3 Live View | 13 |
| <hr/> | |
| Single-view..... | 13 |
| Record..... | 14 |
| 4-VGA..... | 16 |
| DNR..... | 17 |
| Snapshot:..... | 18 |
| Playback..... | 19 |

Figure List

| | | |
|---------|-----------------------------------|----|
| Fig. 1 | ACTi Camera Demo Tool | 5 |
| Fig. 2 | Configuration..... | 6 |
| Fig. 3 | Error message..... | 7 |
| Fig. 4 | Saved successfully..... | 7 |
| Fig. 5 | Preview in Configuration | 8 |
| Fig. 6 | Four modes in Configuration | 8 |
| Fig. 7 | Error message..... | 9 |
| Fig. 8 | Saved successfully..... | 9 |
| Fig. 9 | Preview in Configuration | 10 |
| Fig. 10 | Four modes in Configuration | 10 |
| Fig. 11 | Saved successfully..... | 11 |
| Fig. 12 | Preview in Configuration | 11 |
| Fig. 13 | Customization – Single-view | 12 |
| Fig. 14 | Customization – 4-VGA | 12 |
| Fig. 15 | Customization – DNR | 12 |
| Fig. 16 | Customization – Snapshot..... | 12 |
| Fig. 17 | Single-view | 13 |
| Fig. 18 | Single-view recording | 14 |
| Fig. 19 | Recordings and video info | 15 |
| Fig. 20 | 4-VGA | 16 |
| Fig. 21 | DNR | 17 |
| Fig. 22 | Snapshot..... | 18 |
| Fig. 23 | Snapshot – Zoom..... | 18 |
| Fig. 24 | Single-view recording | 19 |

Overview

Introduction

ACTi Camera Demo Tool is a Windows based programs to help users get started with ACTi's new products (KCM-series) quickly and easily. Users don't need to install NVR, ActiveX, or any image codec to do live streaming and snapshot. The program is programmed to be adaptive to various PC hardware and improve its performance.

Main Specification

| Category | Specifications | Detail |
|---------------|--------------------------------|---|
| Installation | ACTi Camera Demo Tool v1.3.msi | Demo Tool main program. |
| Live View | 1. Single-view | High megapixel video streaming. |
| | 2. 4-VGA | Cropped the single stream to 4-VGA streams. |
| | 3. DNR | DNR on/off. |
| | 4. Snapshot | Snapshot |
| Playback | 1. Open | Open pre-recorded RAW files. |
| | 2. Plyaback | |
| Configuration | 1. Lenovo X200 | |
| | 2. HP ProBook | |
| | 3. Customization | |

System Requirements

Windows 7 Professional/Enterprise/Ultimate

Installation

- 1 Download software package
- 2 Microsoft .NET Framework 2.0 SP2 - NetFx20SP2_x86.exe
- 3 Install software program - ACTi Camera Demo Tool v1.3.msi

System Startup

To make video streaming easier for users, the main page will automatically connect to the last session and display live view. If it is the first that a user runs the program, please follow the instructions to Configuration and manipulate the program.



Fig. 1 ACTi Camera Demo Tool

Configuration

Whenever users enter **Configuration** page, the program will load the last session's info, including PC Configuration, and device IP, account and password. PC Configurations are supposed to help different PC hardware run smoothly while live streaming. In Demo Tool v1.0, we provide Lenovo X200/HP HDX16, HP 4720s/HP 4310s, and the third one is reserved for user-defined configuration.

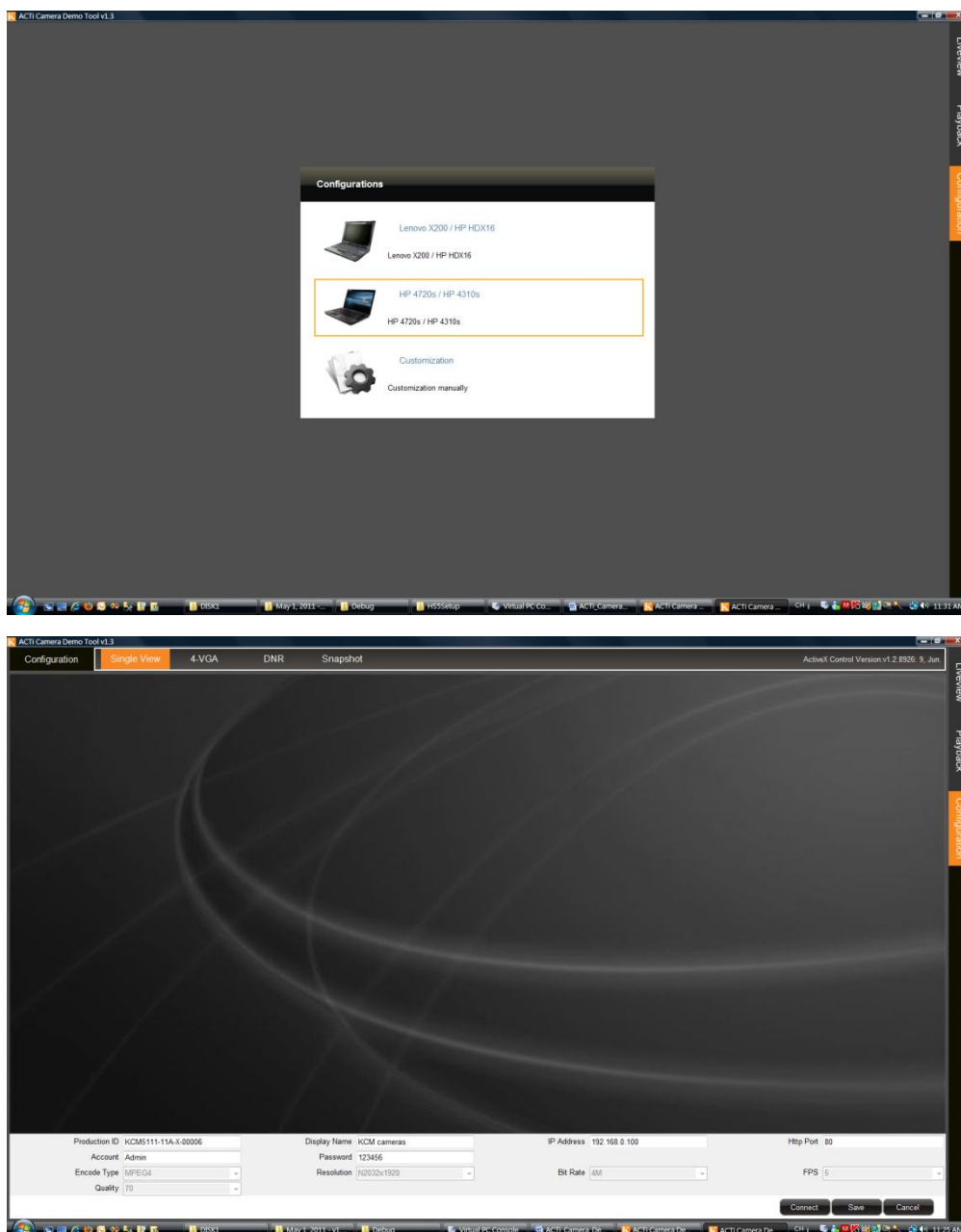


Fig. 2 Configuration

Lenovo X200/HP HDX16 and **HP 4720s/HP 4310s** are NOT configurable. Users cannot modify a single field in these two configurations, including default IP address. Each time users click on one of these two configurations, every field will be loaded with default values.

To start connect to an IP device and save changes, please do the following:

Lenovo X200/HP HDX16

In the **Configuration** page, click on button “**Lenovo X200/HP HDX16**” and the program will start to connect to an IP device. The default IP is 192.168.0.100 due to ACTi IP cameras’ default IP. If the connection fails, the program will display an error message.



Fig. 3 Error message

Please key in the correct IP address, HTTP port number, Account name, and Password. Click on “**Save**” and if values are saved successfully, a windows message shall prompt.

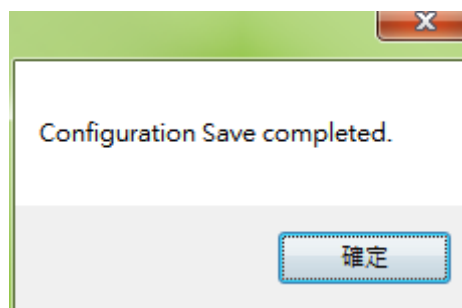


Fig. 4 Saved successfully

Click on “**Connect**”, and the video shall start streaming.

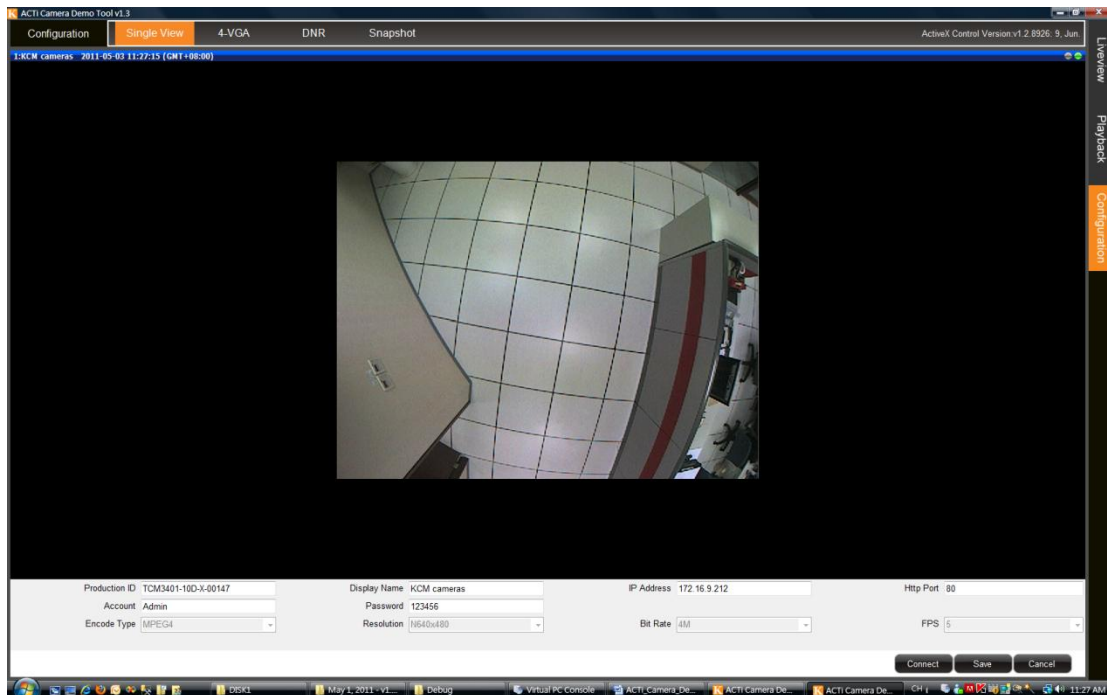


Fig. 5 Preview in Configuration

Now the configuration is saved in *C:\Program Files\ACTi\DemoKit\Active.config*

Please be noticed that once users click on one of the configurations, then you are not allowed to change configuration within this session unless button “**Cancel**” is pressed. After canceled, all three configurations are selectable again.

Advanced Setting

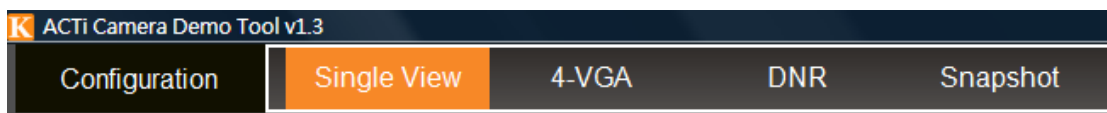


Fig. 6 Four modes in Configuration

Users are NOT allowed to configure settings regarding four mode: **Single-view**, **4-VGA**, **DNR**, and **Snapshot** in **Configuration Lenovo X200**.

HP ProBook

In the Configuration page, click on button “**HP ProBook**” and the program will start to connect to an IP device. The default IP is 192.168.0.100 due to ACTi IP cameras’ default IP. If the connection fails, the program will display an error message.



Fig. 7 Error message

Please key in the correct IP address, HTTP port number, Account name, and Password. Click on “**Save**” and if values are saved successfully, a windows message shall prompt.

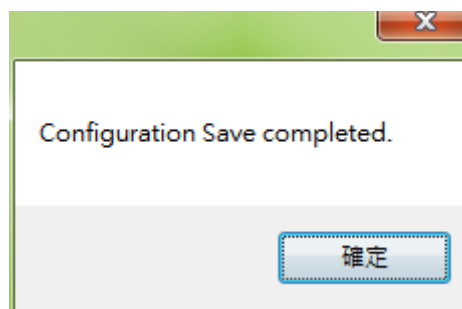


Fig. 8 Saved successfully

Click on “**Connect**”, and the video shall start streaming.

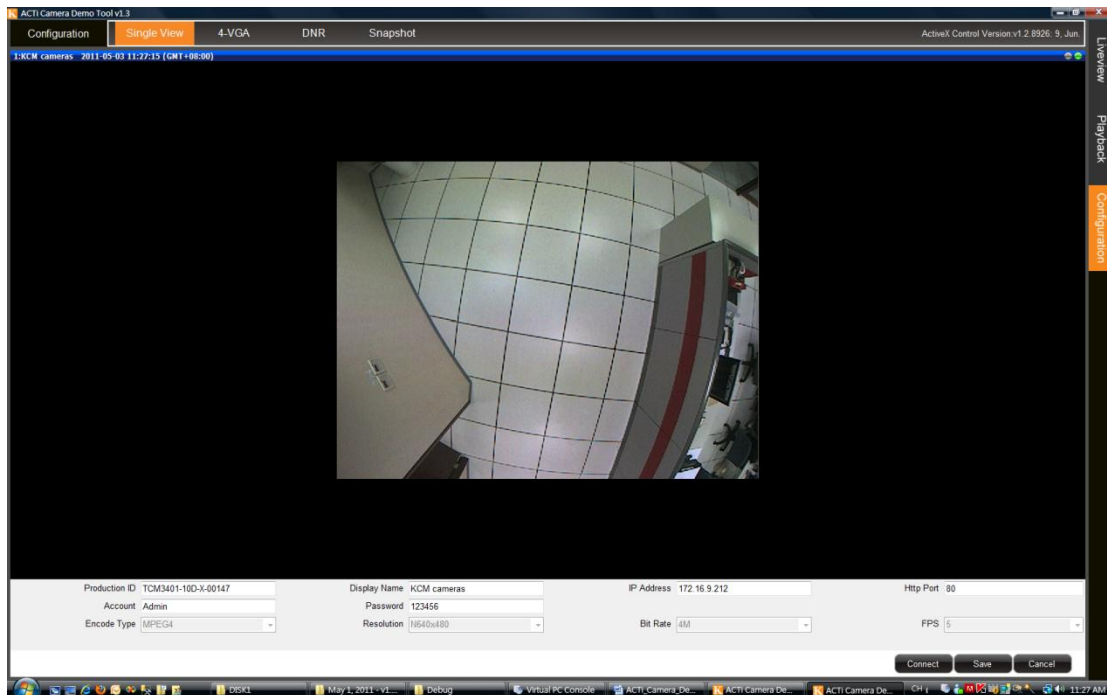


Fig. 9 Preview in Configuration

Now the configuration is saved in *C:\Program Files\ACTi\DemoKit\Active.config*

Please be noticed that once users click on one of the configurations, then you are not allowed to change configuration within this session unless button “**Cancel**” is pressed. After canceled, all three configurations are selectable again.

Advanced Setting

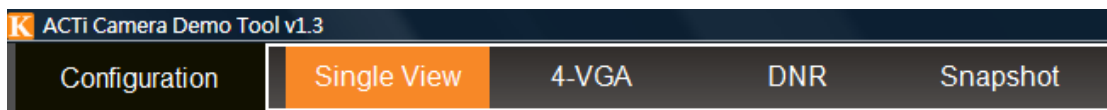


Fig. 10 Four modes in Configuration

Users are NOT allowed to configure settings regarding four mode: **Single-view**, **4-VGA**, **DNR**, and **Snapshot** in **Configuration HP ProBoot**.

Customization

In the **Configuration** page, click on button “**Customization**” and the program will bring up the last session’s settings. If it is the first time configuring in the page, the default IP is 192.168.0.100 due to ACTi IP cameras’ default IP.

Please key in the correct IP address, HTTP port number, Account name, and Password. Click on “**Save**” and if values are saved successfully, a windows message shall prompt.

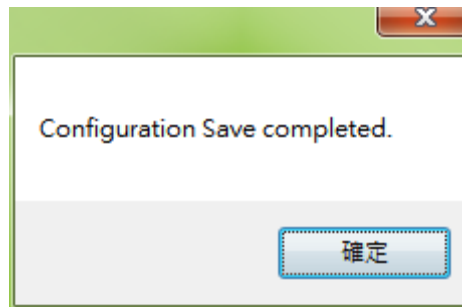


Fig. 11 Saved successfully

Click on “**Connect**”, and the video shall start streaming.

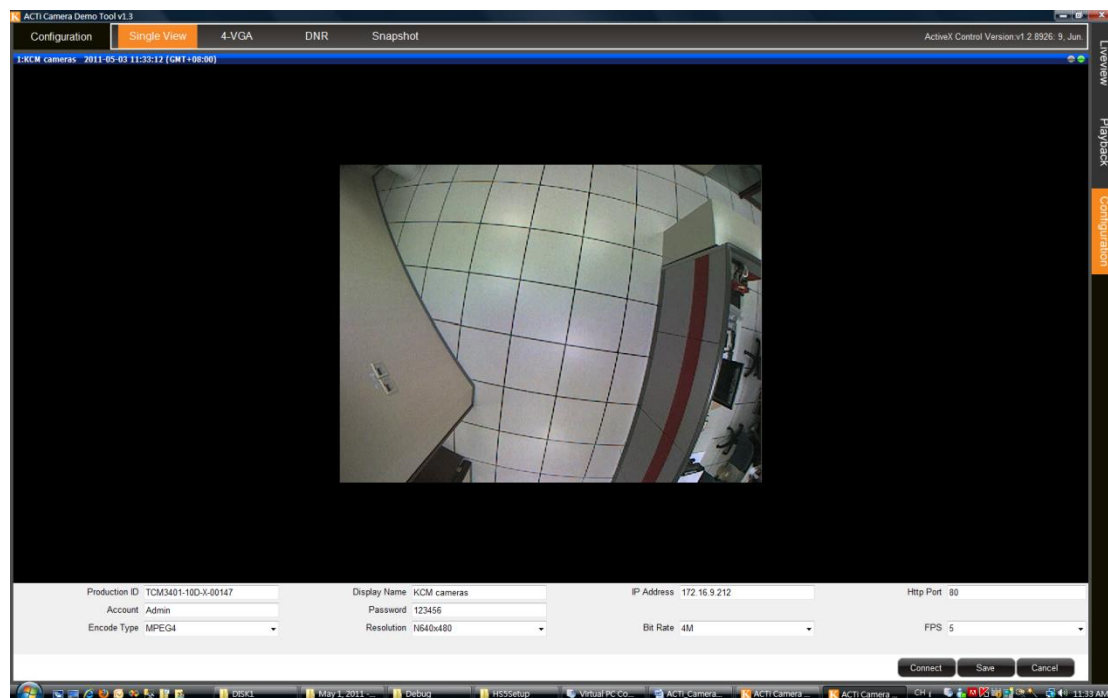


Fig. 12 Preview in Configuration

Now the configuration is saved in *C:\Program Files\ACTi\DemoKit\Active.config*

Please be noticed that once users click on one of the configurations, then you are not allowed to change configuration within this session unless button “**Cancel**” is pressed. After canceled, all three configurations are selectable again.

Advanced Setting

1 Single-view:

Please configure “Encode Type”, “Resolution”, “Bit Rate”, and “FPS”.

| | | | | | | | |
|---------------|---------------------|--------------|-------------|------------|--------------|-----------|----|
| Production ID | KCM5111-11A-X-00006 | Display Name | KCM cameras | IP Address | 172.16.24.46 | Http Port | 80 |
| Account | Admin | Password | 123456 | | | | |
| Encode Type | MPEG4 | Resolution | N2032x1920 | Bit Rate | 4M | FPS | 5 |

Fig. 13 Customization – Single-view

2 4-VGA:

Please configure “Encode Type”, “Resolution”, “Bit Rate”, and “FPS”.

| | | | | | | | |
|---------------|---------------------|--------------|-------------|------------|--------------|-----------|----|
| Production ID | KCM5111-11A-X-00006 | Display Name | KCM cameras | IP Address | 172.16.24.46 | Http Port | 80 |
| Account | Admin | Password | 123456 | | | | |
| Encode Type | MPEG4 | Resolution | N640x480 | Bit Rate | 2M | FPS | 15 |

Fig. 14 Customization – 4-VGA

Notice: The purpose of 4-VGA preview is meant to show video quality only. So the first crop of the original image is displayed.

3 DNR:

Please configure “Encode Type”, “Resolution”, “Bit Rate”, and “FPS”.

| | | | | | | | |
|---------------|---------------------|--------------|-------------|------------|--------------|-----------|----|
| Production ID | KCM5111-11A-X-00006 | Display Name | KCM cameras | IP Address | 172.16.24.46 | Http Port | 80 |
| Account | Admin | Password | 123456 | | | | |
| Encode Type | MPEG4 | Resolution | N1280x720 | Bit Rate | 4M | FPS | 25 |

Fig. 15 Customization – DNR

4 Snapshot:

Please configure “Encode Type” and “Resolution” for still image snapshots.

| | | | | | | | |
|---------------|---------------------|--------------|-------------|------------|--------------|-----------|----|
| Production ID | KCM5111-11A-X-00006 | Display Name | KCM cameras | IP Address | 172.16.24.46 | Http Port | 80 |
| Account | Admin | Password | 123456 | | | | |
| Encode Type | MPEG4 | Resolution | N2032x1920 | Bit Rate | 4M | FPS | 5 |

Fig. 16 Customization – Snapshot

Live View

After configuration is done, please switch to **Liveview** which is the main page of the program and it will automatically connect to the IP address last time saved in **Configuration**. If users leave the **Liveview** page on and switch to **Configuration** to do setup, and then switch back, please wait for a couple of seconds for system synchronization

There are four modes to present KCM-series features in terms of high megapixel video streaming on-demand, 4-VGA cropped video streaming on-demand, DNR technology, and still image on-demand.

Single-view

Single-view display of resolution 2032x1920.

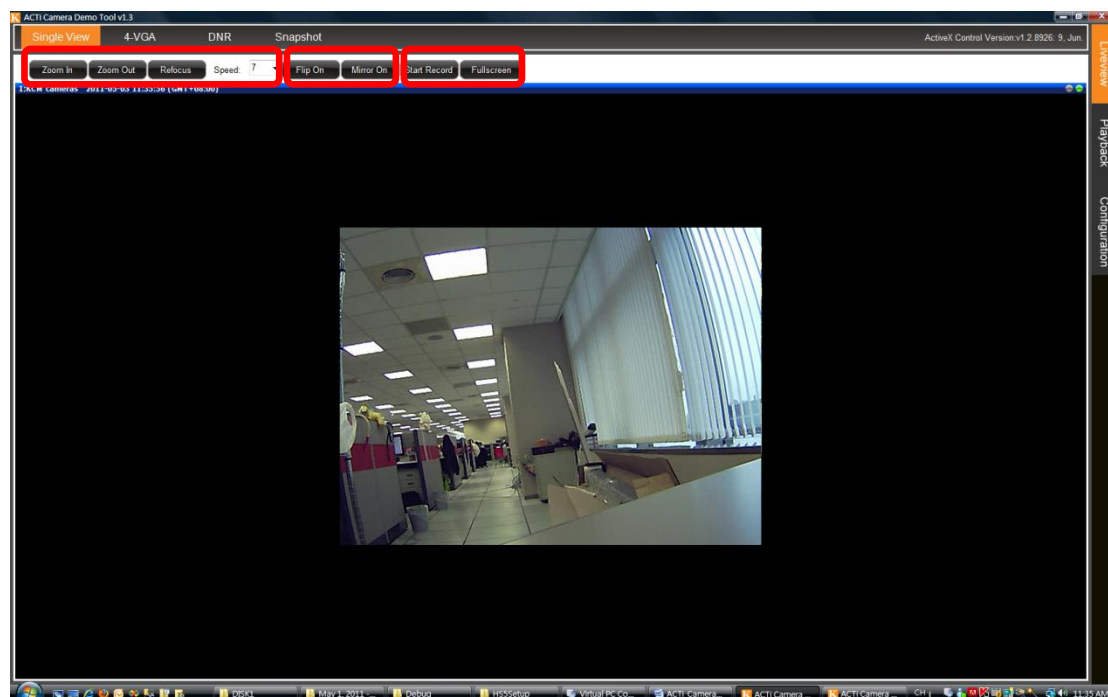


Fig. 17 Single-view

Green light meaning video is streaming normally.

With optical zoom modules, **Zoom In** and **Zoom Out** buttons with **Speed** are selectable. These functions are also available in **DNR** mode.

Notice: Zoom In and Zoom Out buttons are for optical zoom ONLY. For digital zoom, please click on '+'/'- on the display panel or use mouse wheel. Optical focus process is

suggested to be conducted under none-digital-zoom-enabled condition, otherwise, display image may not truly present focus result due to mosaic.

With dome camera, **Mirror On** and **Flip On** can do mirror and flip of the video. These functions are also available in **DNR** mode.

When **Fullscreen** is clicked, image will fit to the entire screen without stretch. Double-click on the screen to exit full screen mode.

Record

Single-view supports recording and playback. Click on **Start Record**, the button would become **Stop Record**. Click on the button again to stop recording. While recording, the video streaming indicator of both red and green light would light up. Red light indicates video in recording.

After stop recording, the recorded video clip is saved under C:\[Users]\[User name]\My Picture\ Recordings are named by time code and in the format of RAW.

Video info will automatically be exported as plain text file under the same folder of each recording file.

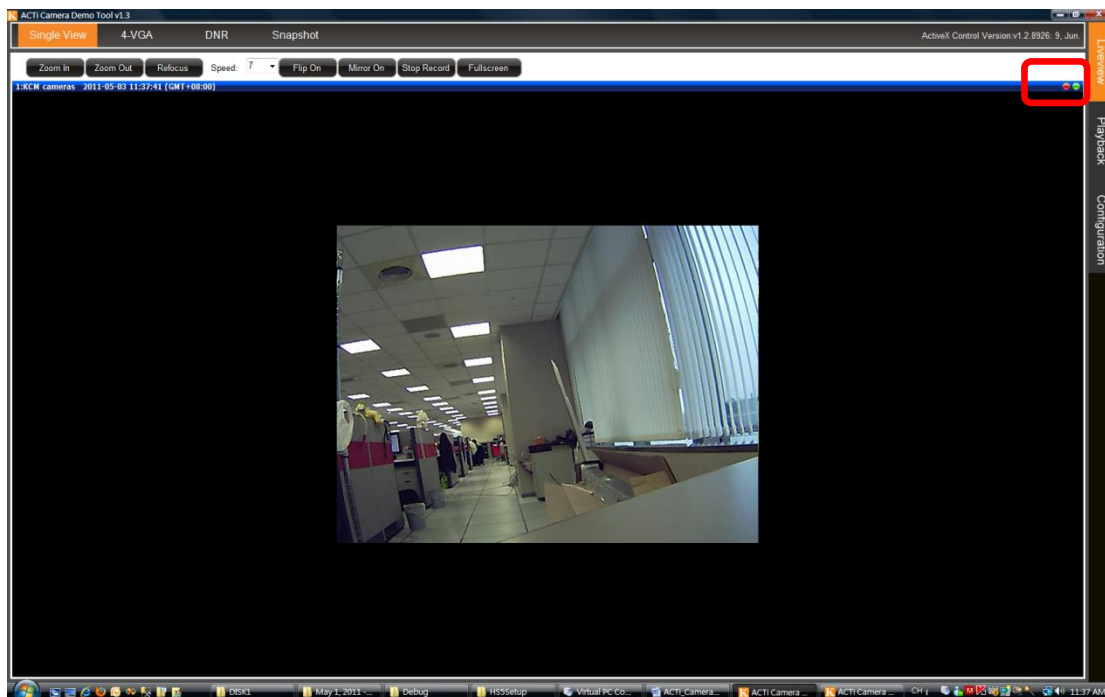


Fig. 18 Single-view recording






| | | |
|---|-------------------|-----------|
|  1_20110406_144707.txt | 4/6/2011 2:47 PM | 418 KB |
|  1_20110406_144707.raw | 4/6/2011 2:47 PM | 1,124 KB |
|  1_20110406_143911.txt | 4/6/2011 2:39 PM | 397 KB |
|  1_20110406_143911.raw | 4/6/2011 2:39 PM | 16,412 KB |
|  1_2011215_155946.txt | 2/15/2011 3:59 PM | 22 KB |

Fig. 19 Recordings and video info

4-VGA

Before users run 4-VGA mode display, please configure desired cropping positions in Web Configurator in advance. Otherwise, the default position is centered in the image.

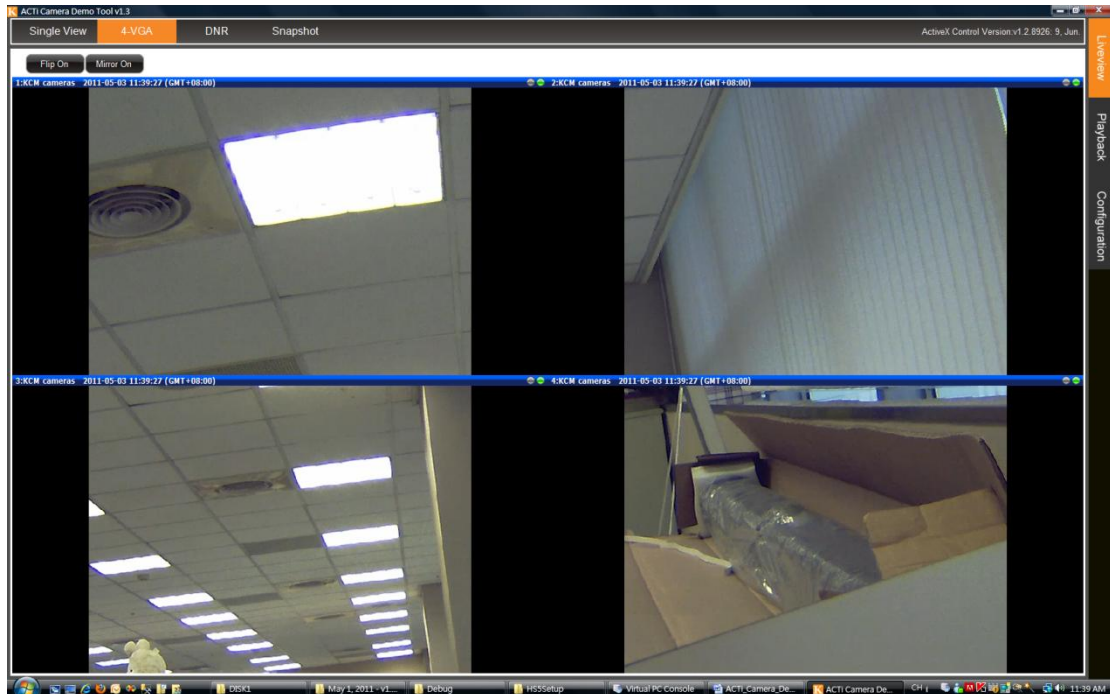


Fig. 20 4-VGA

DNR

When **DNR** is selected, users may enable or disable via switching between “**On**” and “**Off**” to compare image quality.

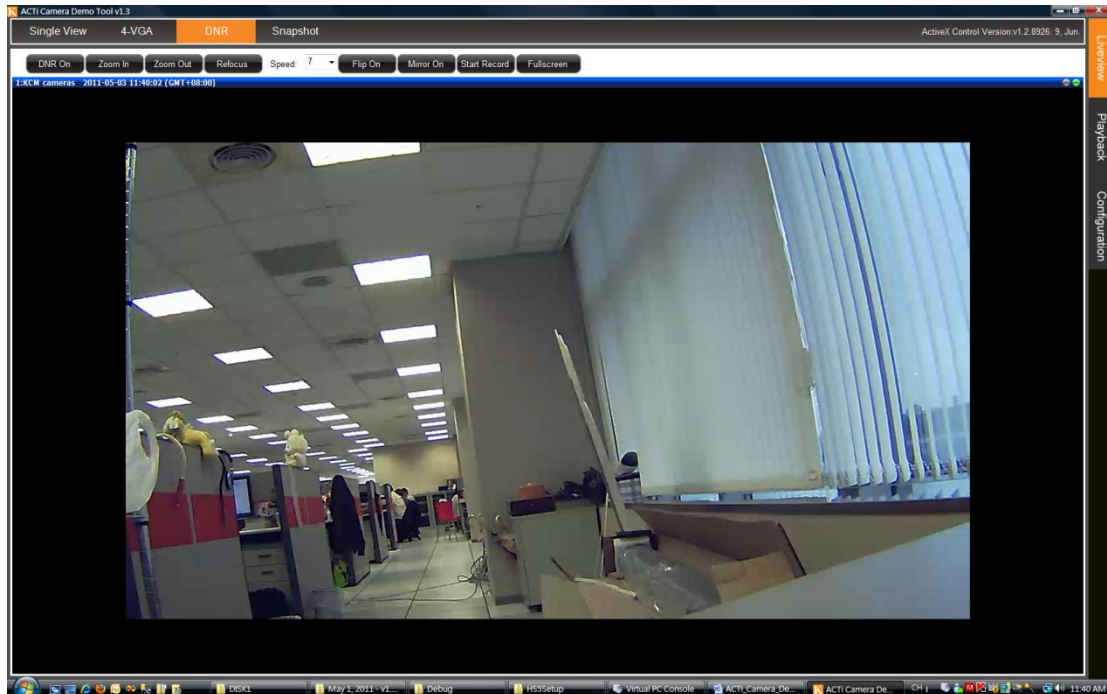


Fig. 21 DNR

Snapshot:

When **Snapshot** is selected, streaming stops and the program display a single snapshot of the channel. Move your mouse over the image and scroll up and down to zoom-in and zoom-out.

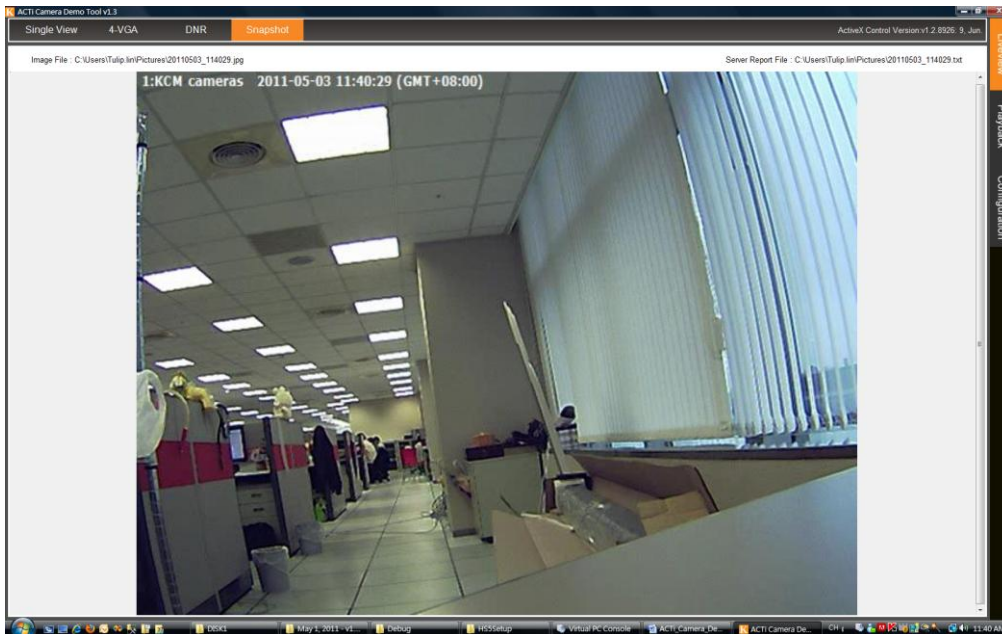


Fig. 22 Snapshot

Use scroll bar to move in vertical or horizontal.

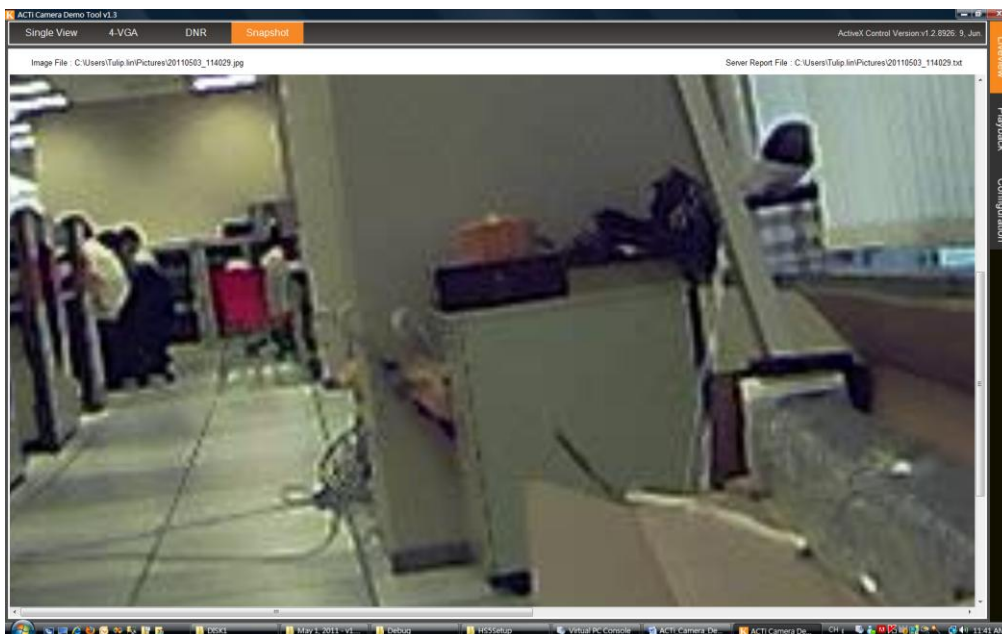


Fig. 23 Snapshot – Zoom

The snapshot image is saved under C:[Users][User name]\My Picture\ The file is named by time code and in JPG format.

Playback

Click on **Open File** to open a RAW file to start playback.

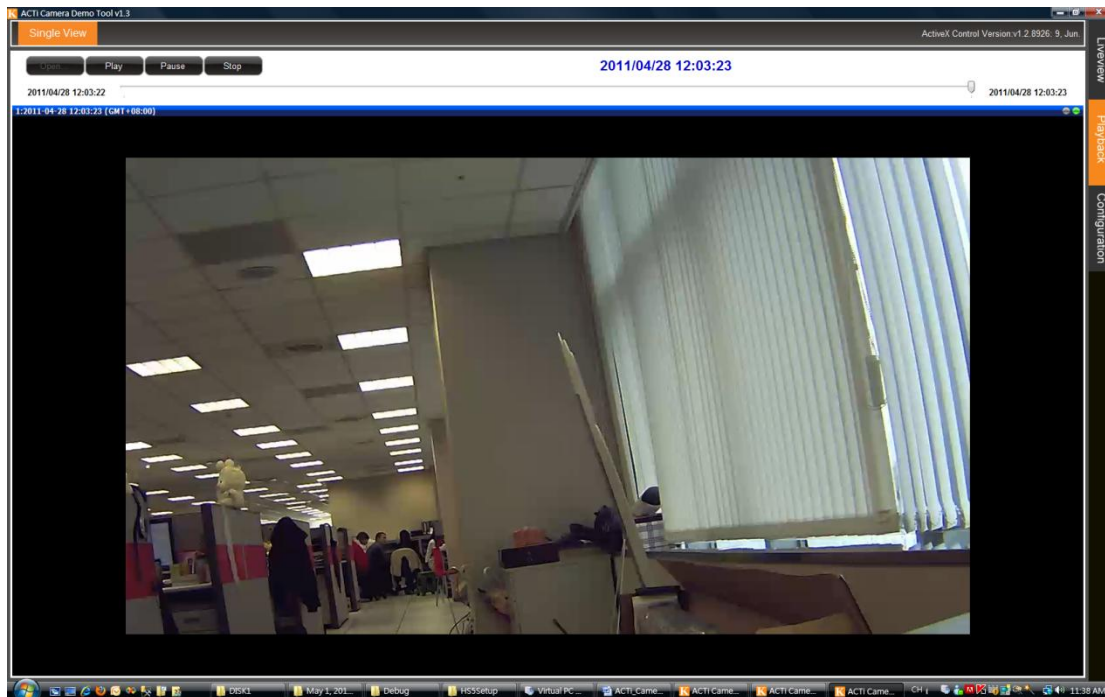


Fig. 24 Single-view recording

Record and playback functions are also supported in DNR mode.

Special Notice:

If HDD doesn't have enough space to save recordings, Record function will not be able to carry out. Please make sure HDD status is health enough for recording.