



**Video Server**  
**SED-2610**  
**Quick Installation Guide**

**Ver.080514**



[www.acti.com](http://www.acti.com)

# 1

## Getting Started

### 1.1 PACKAGE CONTENTS

SED-2610



Warranty Card



Software CD



Terminal Blocks



Power Cord



Bracket



## 1.2 PHYSICAL DESCRIPTION



1. **Channel Number**

2. **Video Input**

Each channel supports one analog video input of composite signal with BNC connectors

3. **Action LED Indicator**

The LED will light up after video server has successfully completed the boot process.

4. **Serial Port LED Indicator**

LEDs indicating when serial port is active.

5. **LAN LED Indicator**

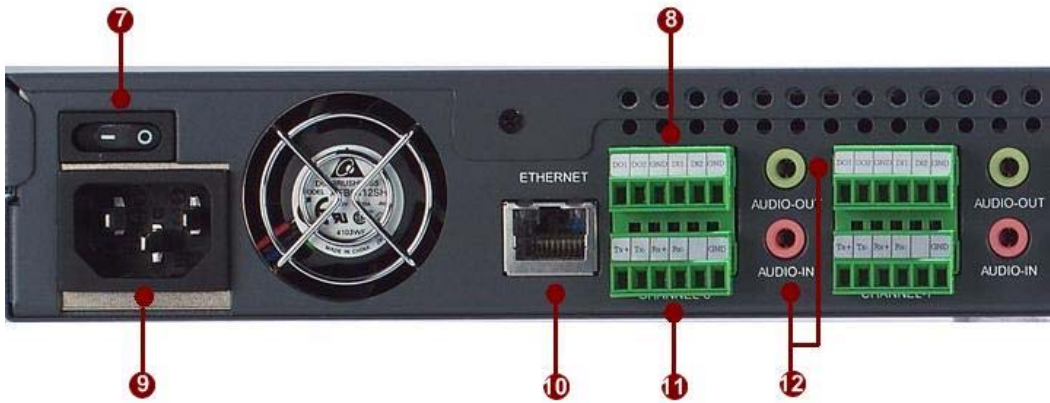
LEDs indicating when LAN is active.

6. **Reset Button**

**Step 1:** Switch off video server by disconnecting the power cable

**Step 2:** Using a suitable pointed object, press and continue to hold the Reset Button depressed. While continuing to hold the reset button depressed, reconnect the power cable.

**Step 3:** Keep holding the reset button depressed around 6 seconds, release the reset button. The unit will start up with factory default settings.



**7. Power Switch**

Video Server power switch.

**8. Terminal Blocks Pin 1~6**

The video server supports two alarm input and two alarm output. DI: Logic Level 0: 0~0.4V; Logic Level 1: 3.3~30V      DO: Logic Level 0: 0.1~0.6V; Logic Level1: 2.4~5V



| PIN | NAME | DESCRIPTION      |
|-----|------|------------------|
| 1   | DO1  | Digital Output 1 |
| 2   | DO2  | Digital Output 2 |
| 3   | GND  | Ground Pin       |
| 4   | DI1  | Digital Input 1  |
| 5   | DI2  | Digital Input 2  |
| 6   | GND  | Ground Pin       |

**9. AC Power Input**

100-240V AC 50/60Hz Power Input.

**10. ETHERNET Port**

The Video server connects to the Ethernet via a standard RJ45 connector.

Supporting NWAY, this Video server can auto detect the speed of local network segment (10Base-T/100Base-TX Ethernet). The Ethernet port is for FTTH and can connect to a xDSL or cable modem

**11. Terminal Blocks Pin 7~12**

Pin 7~10: RS232/422/485. Default mode is RS-485

Pin 12: GND



| PIN | NAME | DESCRIPTION |        |        |
|-----|------|-------------|--------|--------|
|     |      | RS-485      | RS-422 | RS-232 |
| 7   | Tx+  | D+          | Tx+    | Tx     |
| 8   | Tx-  | D-          | Tx-    |        |
| 9   | Rx+  |             | Rx+    | Rx     |
| 10  | Rx-  |             | Rx-    |        |
| 11  |      |             |        |        |
| 12  | GND  | Ground Pin  |        |        |

\* RS-232 mode requires user to set the jumpers inside the video server.

Because opening the video server will void the warranty, please contact your distributor for how to switch to RS-232 mode.

## 12. Audio Input / Output

The video server supports one audio input and output with earphone jack

# 2

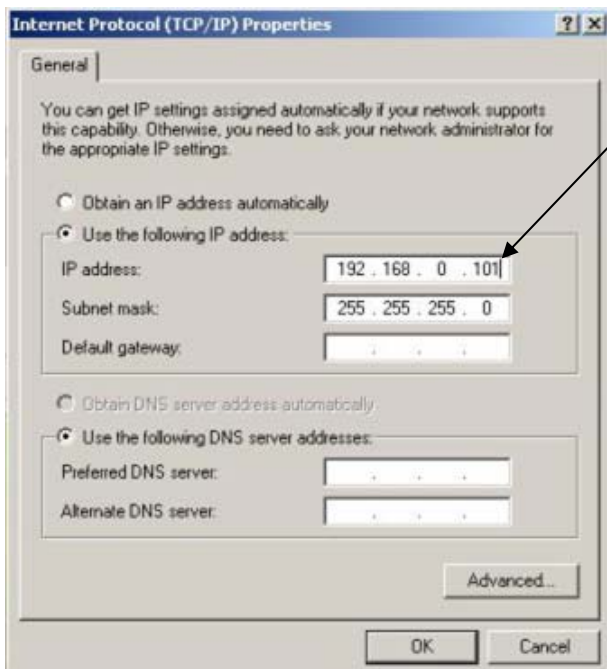
## Quick Tour

This section guides you with a quick tour on video server.

### 2.1 Configure the Video Server

#### 2.1.1 Make sure network environment

Default IP of video server is 192.168.0.100. Please make sure video server and your PC are on the same network segment before running the installation.



Please set the settings as below.

IP address: 192.168. 0.xxx  
Subnet mask: 255.255.255. 0

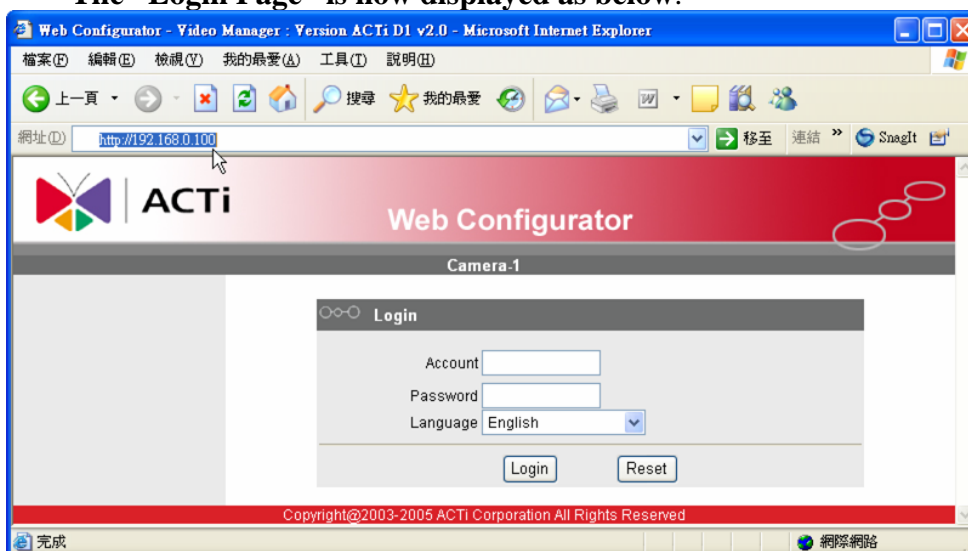
(**NOTE:** xxx should be a number from 1 to 254, but 100 is excepted.)

## 2.1.2 Open Internet Explorer with IP address

- **STEP1:** Open a browser
- **STEP2:** Enter the IP address of the IP device.

The default IP address is “192.168.0.100”

The “Login Page” is now displayed as below.



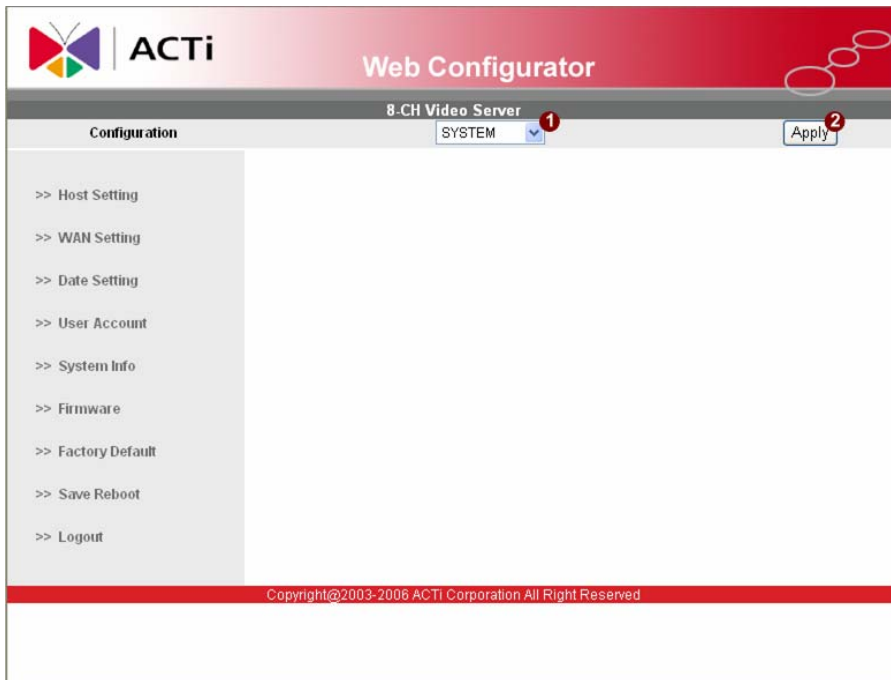
- **STEP3:** Enter the Account name (factory default: Admin) and the Password (factory default: 123456).



**NOTE:** Internet Explorer of 6.0 or above is highly recommended. If you don't have the it, please download it from <http://www.microsoft.com/windows/ie/downloads/default.msp>

- **STEP4:** Select the language of the IP device user interface. You can select from English, Traditional Chinese, Simplified Chinese, Japanese, Spanish, Italian, German, Portuguese, Czech and French. This user interface setting will disappear once you log out, if you want to change the default user interface language, please change the setting of [Host setting] after login successes.
- **STEP5:** Click the **Login** button to login or click the **Reset** button to re-enter again.

Once successfully login, the “Main Setup page” will be displayed as below.



- **STEP1:** Click **1** to set system configurations of 8-CH Video Server
- **STEP2:** Click **2** to apply the choice

## 2.1.3 Set New IP

Click the [WAN Setting] on the “Main Setup page”. The “WAN setting page” is displayed as below.

ACTi Web Configurator

8.CH Video Server

Configuration SYSTEM Apply

>> Host Setting  
>> WAN Setting  
>> Date Setting  
>> User Account  
>> System Info  
>> Firmware  
>> Factory Default  
>> Save Reboot  
>> Logout

WAN Setting

Dynamic IP Address  
 Static IP Address

IP Address 192 . 168 . 0 . 100  
Subnet Mask 255 . 255 . 255 . 0  
ISP Gateway 192 . 168 . 0 . 254

PPPoE  
User Name  
Password

Apply Reset

Multicast Setting

Multicast IP 228 . 5 . 7 . 1  
Multicast TTL 255  
\*IGMP Disable

Apply Reset

DNS Server Setting

Primary DNS Server  
Secondary DNS Server

Apply Reset

DDNS Server Setting

DDNS Type Disable  
Service ISP members.dyndns.org  
Host Name  
User Name  
Password

Apply Reset

Copyright©2003-2006 ACTi Corporation All Right Reserved

\***IP Address** : The IP address of the LAN interface. The default IP address is 192.168.0.100.

\***Subnet Mask** : The subnet mask of the LAN interface. The default subnet mask is 255.255.255.0

\***Click**  button



**NOTE:** Check with your MIS department, if Client PC and IP rugged dome are setting in different VLANs, please connect to WAN port.



**NOTE:** In your Client PC, please make sure the setting of Network Connections Type is set to Auto Negotiation, since IP rugged dome follows MII standard. Otherwise, you might not see the live image.

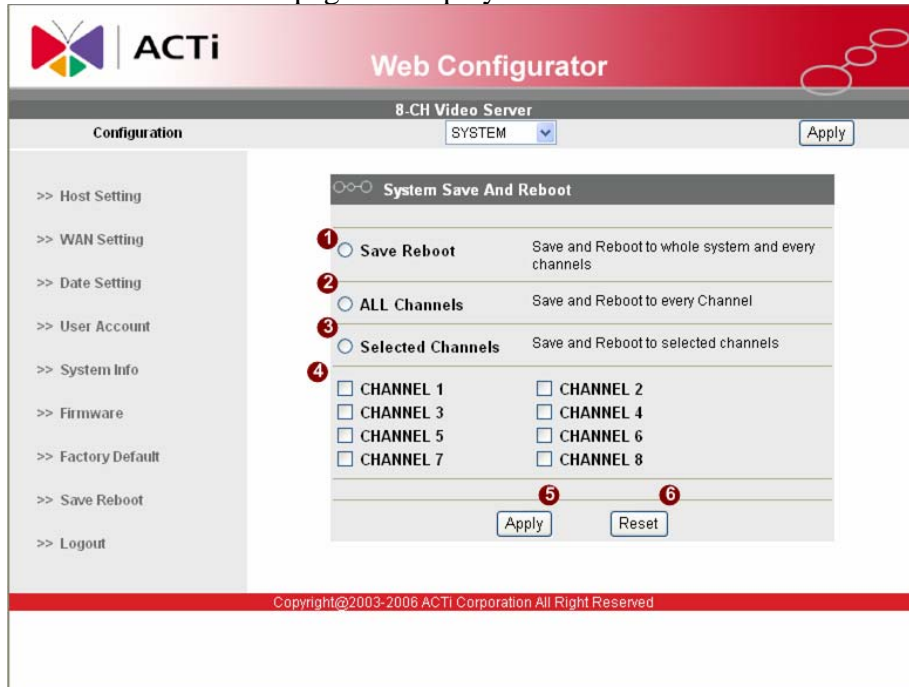


**IMPORTANT:** After the IP address is changed, please record this IP address. There is no way to connect to the IP rugged dome if user forgets the new IP address.

## 2.1.4 Save Reboot

- **STEP1:** Click the [Save and reboot] on the “Main Setup page”.

The “Save and reboot page” is displayed as below.



- **STEP2:** The Action LED indicator will light down to indicate that the IP device is rebooting. After around 30 seconds, the Action LED will light up again to indicate that the reboot is completed.

## 2.1.5 Configuring the IP device – Channel

This section describes how to configure the system part of IP device.

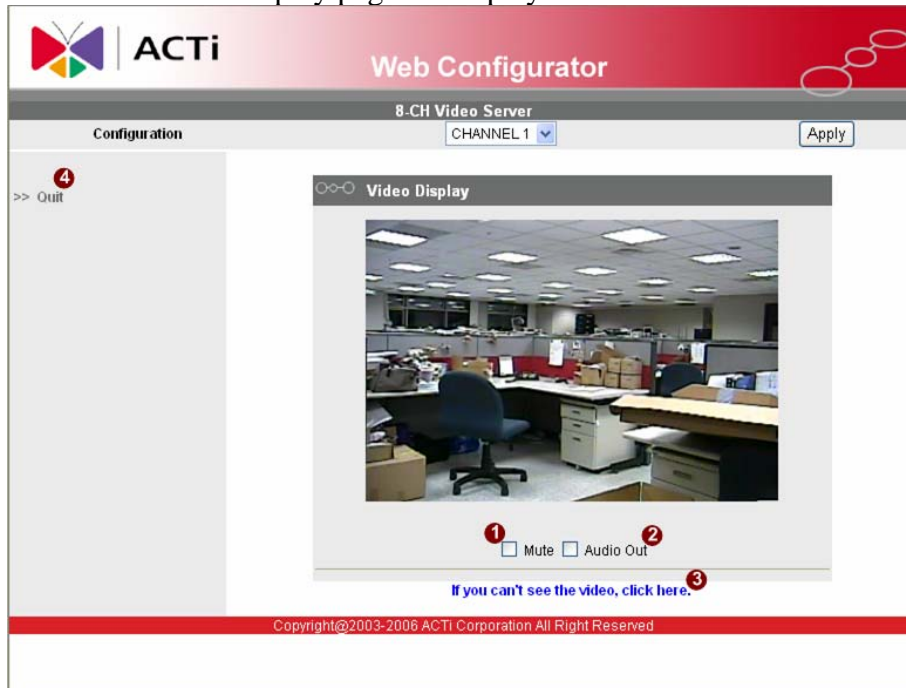


- **STEP1:** Click **1** to set configurations of every single channel of 8-CH Video Server
- **STEP2:** Click **2** to apply the choice

## 2.1.6 Preview the video

- **STEP1:** Click the [Video Display] on the “Main Setup page”.

The “Video Display page” is displayed as below.

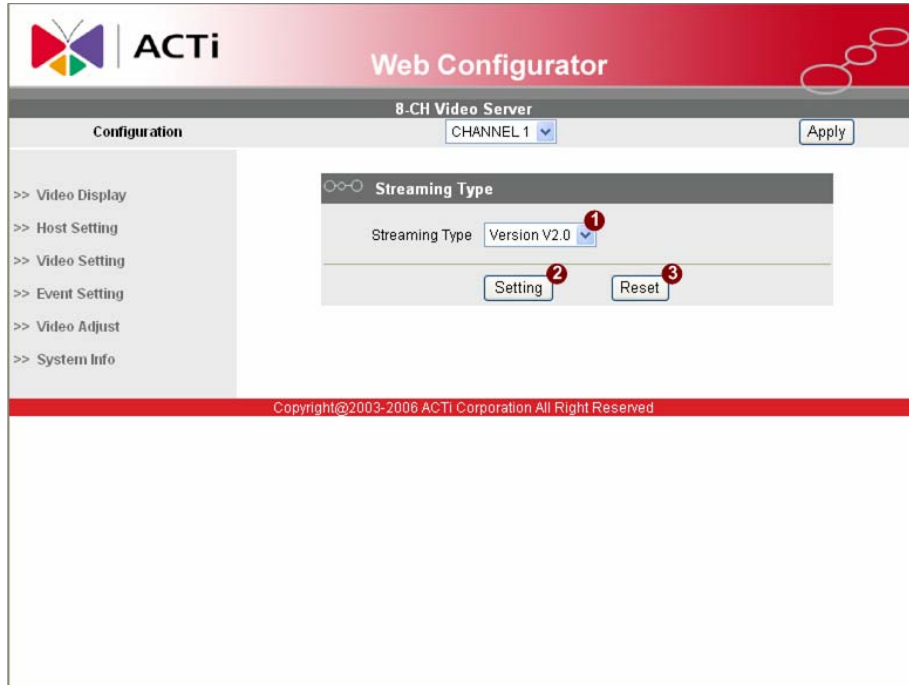


- **STEP2:** Check the **1** [Mute] checkbox to select mute enable/disable
- **STEP3:** Click the **2** [Audio Out] checkbox to enable/disable audio output from control PC to IP device.
- **STEP4:** Click the **3** if you cannot see the video, and follow the instructions.
- **STEP5:** Click the **4** [Quit] to exit the live view and return to “Main Setup page”.

## 2.1.7 Check Default Video Setting


- **STEP1:** Click the [Video Setting] on the “Main Setup page”.

The “Video setting page” is displayed as below.



- **STEP2:** Click **2** to enter the configuration table.

Click the <sup>13</sup> [Apply] button of each setting to confirm the settings or click the <sup>14</sup> [Reset] button to re-enter the parameters.

 **NOTE:** Please make sure the TV Input (NTSC / PAL) is meet your requirement, and click Apply button.