



IR 3-inch Indoor Fixed Dome
(with DC 12V / PoE)

ACM-3311

Ver. 070412

Quick Installation Guide



www.acti.com

1

Getting Started

1.1 PACKAGE CONTENTS

ACM-3311
(DC12V / PoE)



Power Adaptor (Option)



Product CD



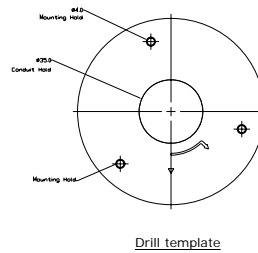
Accessory



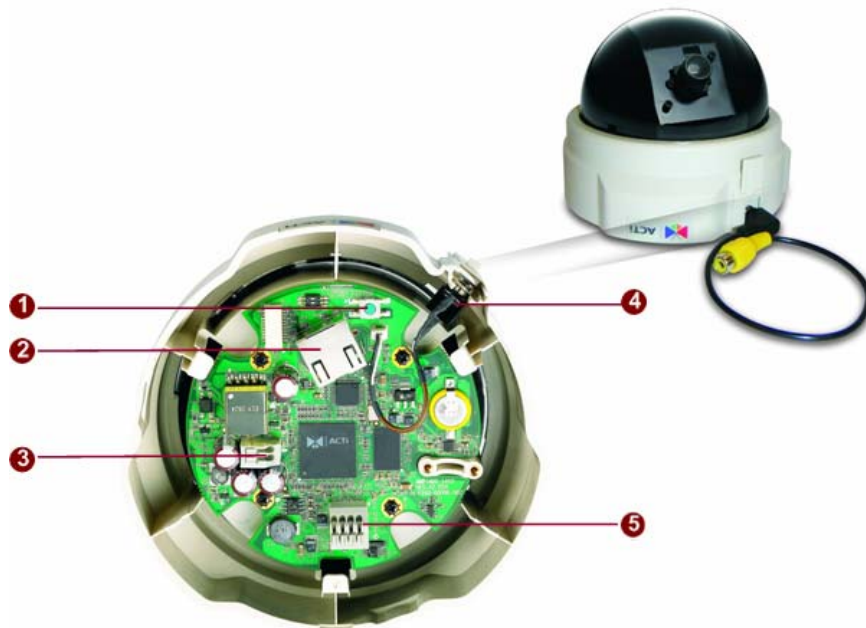
Warranty Card



Drill Template



1.2 PHYSICAL DESCRIPTION



1. **Reset Button**

Step 1: Switch off IP device by disconnecting the power cable

Step 2: Press and continue to hold the Reset Button. Reconnect the power cable while continuing to hold the reset button.

Step 3: Keep holding the reset button depressed for a while, release the reset button. The unit will start up with factory default settings.

2. **Ethernet Port**

The IP device connects to the Ethernet via a standard RJ45 connector. Supporting NWAY, this IP device can auto detect the speed of local network segment (10Base-T/100Base-TX Ethernet).

3. **Power Input**

If your power input is DC12V. Please follow the description on the connector to connect to power.



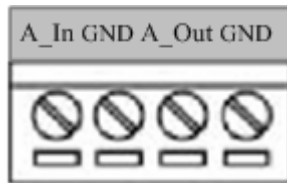
PIN	NAME	DESCRIPTION
1	12V	DC Power Input
2	GND	Ground Pin

4. **Analog Video Output**

The IP device supports one analog video output.

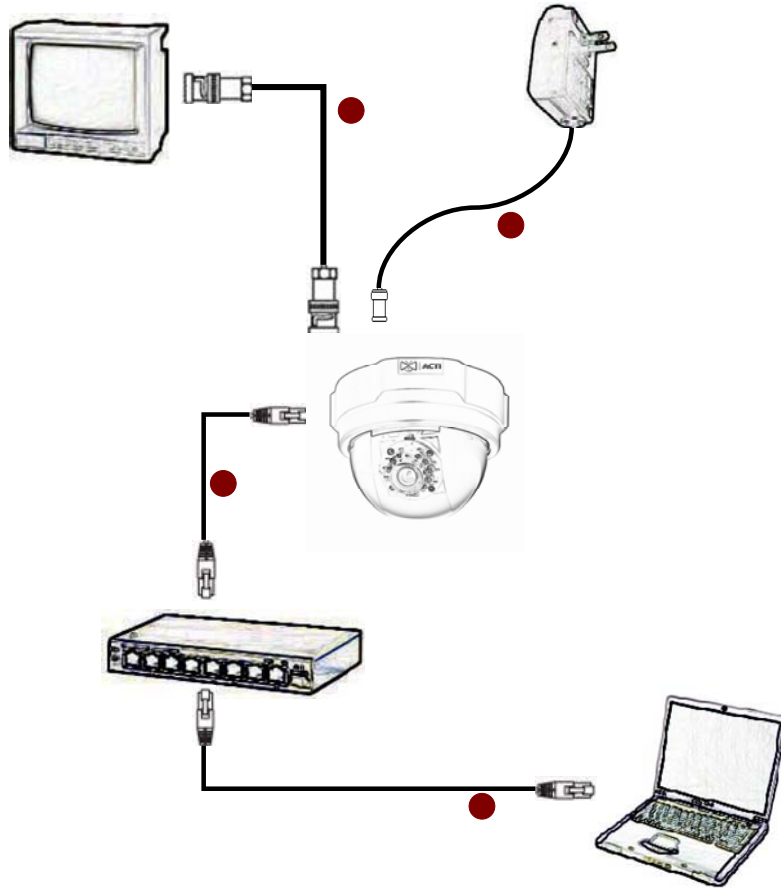
5. **Audio Input / Output**

The IP device supports audio input and output with terminal block.



1.3 BASIC CONNECTIONS

Follow the procedures below to connect the IP device to the respective apparatuses.



1. Connect an analog monitor to IP device video out (BNC connector).
2. Connect the power adaptor to IP device
3. Connect IP device's ethernet port to an Ethernet (RJ45 connectors). If your IP device has PoE built-in, you can regard it as a PD and connect it directly to a PSE device like PoE switch.
4. Connect a PC to the Ethernet hub (RJ45 connectors)



NOTE: You may find a support package for help you getting familiar with PoE. Please visit our web site, and get the support document TS-00040.

1.4 Installation Procedure

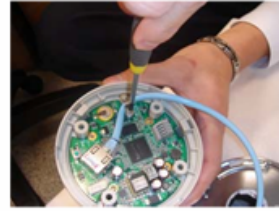
1. Fix the mount plate



2. Insert the cables



3. Route the cables



4. Attach dome to mount plate



5. Adjust camera angle



6. Fasten the camera to ceiling



2

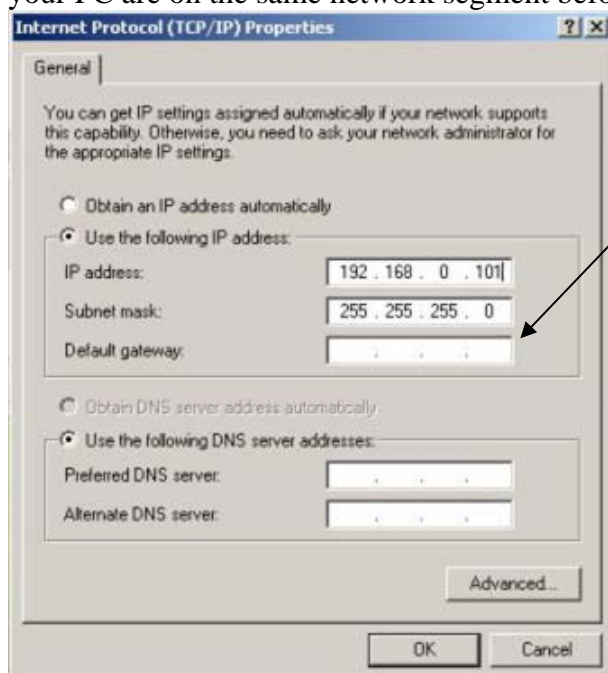
Quick Tour

This section guides you with a quick tour on this IP device.

2.1 Configure this IP Device

2.1.1 Make sure network environment

Default IP of this IP device is 192.168.0.100. Please make sure this IP device and your PC are on the same network segment before running the installation.

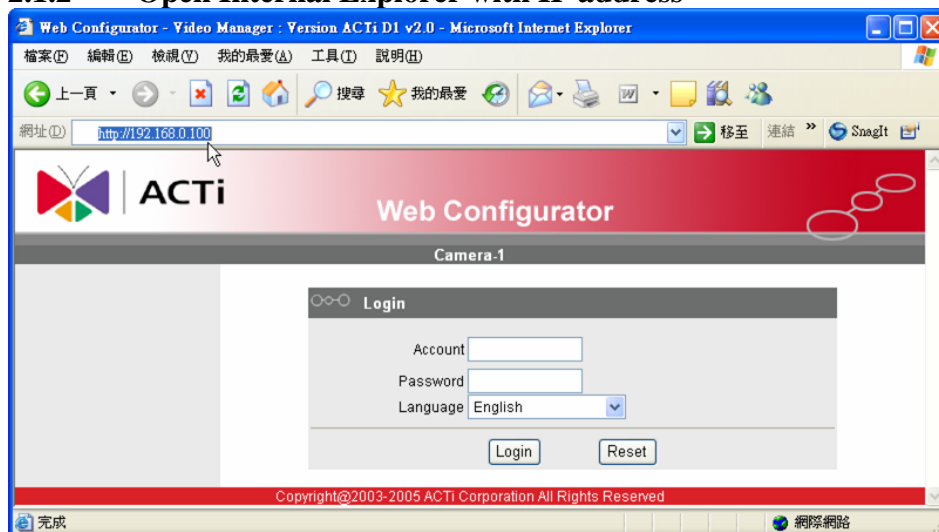


Please set the settings as below.

IP address: 192.168.0.xxx
Subnet mask: 255.255.255.0

(NOTE: xxx should be a number from 1 to 254, but 100 is excepted.)

2.1.2 Open Internet Explorer with IP address





NOTE: If your web browser is earlier than IE6, then download IE6 is recommended.



NOTE: This IP device default IP address is set to 192.168.0.100

2.1.3 Login with default administrator's account & password



NOTE: Default administrator account is set to **Admin**, password is set to **123456**, and click **Login** button.

2.1.4 Preview the video



2.1.5 Set the new IP address

The screenshot shows the ACTi Web Configurator interface for 'Camera 1'. The left sidebar contains navigation options: Video Display, Host Setting, WAN Setting, Date Setting, Video Setting, Video Adjust, User Account, System Info, Firmware, Factory Default, Save Reboot, and Logout. The main content area is divided into three sections:

- WAN Setting ***: Includes radio buttons for 'Dynamic IP Address' (selected) and 'Static IP Address'. Below are input fields for IP Address (192, 168, 0, 100), Subnet Mask (255, 255, 255, 0), and ISP Gateway (192, 168, 0, 254). There are also input fields for User Name and Password under the 'PPPoE' section. 'Apply' and 'Reset' buttons are at the bottom.
- DNS Server Setting**: Includes input fields for Primary DNS Server and Secondary DNS Server. 'Apply' and 'Reset' buttons are at the bottom.
- DDNS Server Setting**: Includes a dropdown for DDNS Type (set to 'Disable'), a dropdown for Service ISP (set to 'members.dyndns.org'), and input fields for Host Name, User Name, and Password. 'Apply' and 'Reset' buttons are at the bottom.



Numbered callouts (1-17) point to various elements: 1 (Dynamic IP), 2 (Static IP), 3 (IP Address field), 4 (Subnet Mask field), 5 (ISP Gateway field), 6 (PPPoE), 7 (User Name), 8 (Password), 9 (Apply), 10 (Reset), 11 (Primary DNS), 12 (Secondary DNS), 13 (DDNS Type), 14 (Service ISP), 15 (Host Name), 16 (User Name), 17 (Password).

Copyright@2003-2006 ACTi Corporation All Right Reserved

***IP Address** : The default IP address is 192.168.0.100.

***Subnet Mask** : The default subnet mask is 255.255.255.0

***Click**  button

	<p>NOTE: In your Client PC, please make sure the setting of Network Connections Type is set to Auto Negotiation, since this IP device follows MII standard. Otherwise, you might not see the live image.</p>
	<p>IMPORTANT: After the IP address is changed, please record this IP address. There's no way to connect to the IP device if user forgets the new IP address.</p>

2.1.6 Check Default Video Setting

ACTi Web Configurator

Camera-1

Version V2.0 - Video Setting

Camera Name: Camera-1

Streaming Method: TCP Only

Audio In: Enabled

Multicast IP: 228.5.6.1

Multicast TTL: 255

IGMP: Disabled

Analog Video: NTSC

Resolution: N352x240

Bitrate: 1.2M

Frame Rate Mode: Constant

Frame Rate: 30

Serial Port Baud Rate: 9600

Serial Port Control: 8,None,1

Video Control Port: 6001

Video Streaming Port: 6002

Video Multicast Port: 5000

Apply Reset

Copyright@2003-2006 ACTi Corporation All Right Reserved



NOTE: Please make sure the TV Input (NTSC / PAL) is meet your requirement, and click **Apply** button.

2.1.7 Click **Save Reboot** to restore all settings and please wait about 30 seconds for system reboot.