



**Megapixel IP IR D/N PoE Outdoor  
Bullet Camera**  
(with DC 12V / PoE)

**ACM-1231**

Ver. 120426

**Quick Installation Guide**



[www.acti.com](http://www.acti.com)



# 1

## Getting Started

### 1.1 PACKAGE CONTENTS

ACM-1231  
(DC12V / PoE / AC24V)

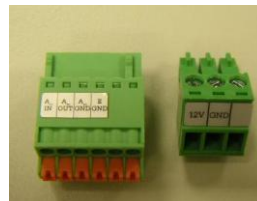


The bracket is not included

Product CD



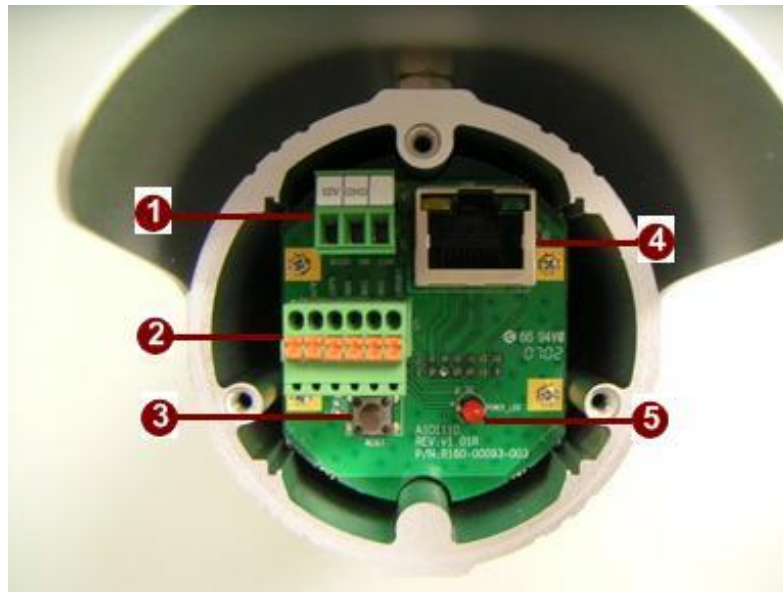
Terminal Block for Power



Warranty Card



## 1.2 PHYSICAL DESCRIPTION



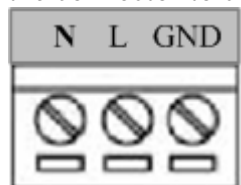
### 1. Power Input

If your power input is DC12V. Please follow the description on the connector to connect to power.



PIN	NAME	DESCRIPTION
1	12V	DC Power Input
2	GND	Ground Pin

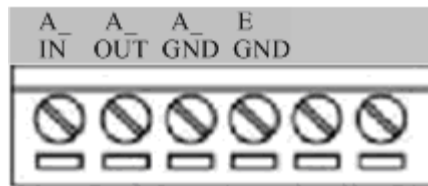
If your power input is AC24V. Please follow the description on the connector to connect to power.



PIN	NAME	DESCRIPTION
1	N	AC Power Input
2	L	AC Power Input
3	GND	E-Ground of power

2. **Audio Input / Output**

The IP device supports audio input and output, with terminal block.



3. **Reset Button**

**Step 1:** Switch off IP device by disconnecting the power cable

**Step 2:** Press and continue to hold the Reset Button. Reconnect the power cable while continuing to hold the reset button.

**Step 3:** Keep holding the reset button depressed for a while, release the reset button. The unit will start up with factory default settings.

4. **Ethernet Port**

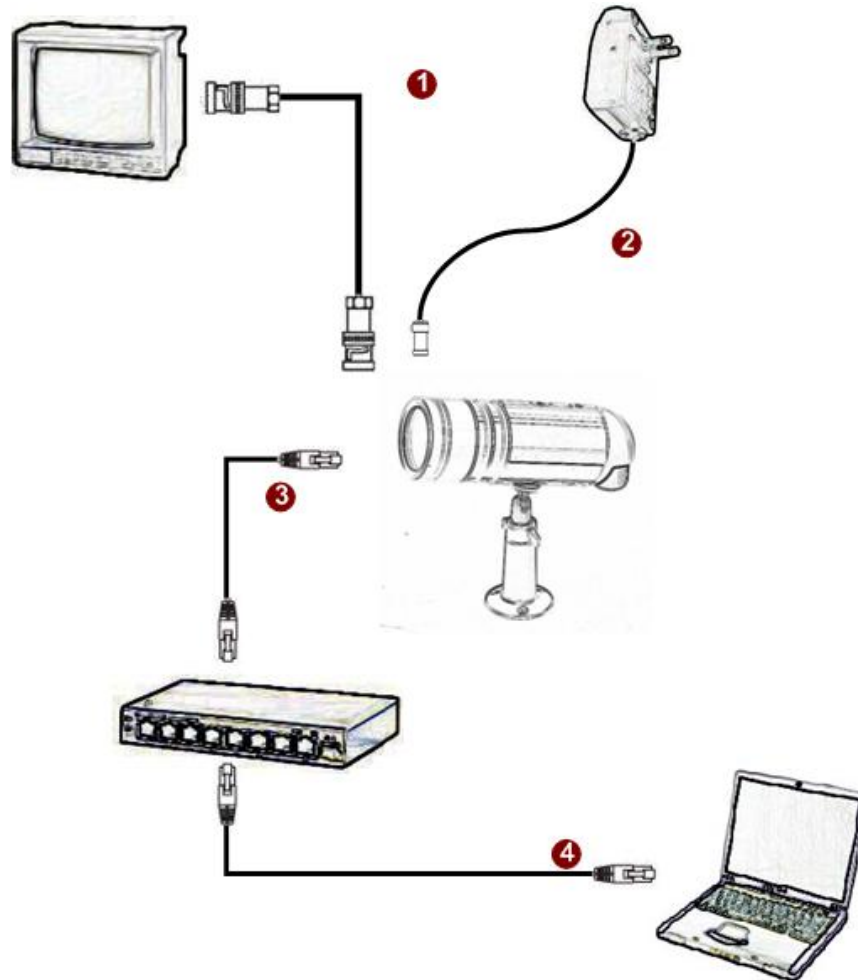
The IP device connects to the Ethernet via a standard RJ45 connector. Supporting NWAY, this IP device can auto detect the speed of local network segment (10Base-T/100Base-TX Ethernet).

5. **Power LED Indicator**

The LED indicator lights up one time upon power up. It will lights up again when this IP device is fully booted up.

## 1.3 BASIC CONNECTIONS

Follow the procedures below to connect the IP device to the respective apparatuses.



1. Connect an analog monitor to IP device video out (BNC connector).
2. Connect the power adaptor to IP device
3. Connect IP device's ethernet port to an Ethernet (RJ45 connectors). If your IP device has PoE built-in, you can regard it as a PD and connect it directly to a PSE device like PoE switch.
4. Connect a PC to the Ethernet hub (RJ45 connectors)



**NOTE:** You may find a support package for help you getting familiar with PoE. Please visit our web site, and get the support document TS-00040.

## 1.4 Installation Procedure

The following installation procedure makes the camera be water-resistant even for the situations where the camera can easily be flooded by pouring rain.

### The important part to focus on during the installation:

The protection of the cabling has to be done by a proper flex conduit. The size of the flex conduit that matches with the conduit gland is 1/2". Please note that the **conduit gland is included to the package** of the bullet camera.



The following images show the step-by-step procedure of completing the water-proof installation.



1. Disassemble the conduit gland as shown on the photo.
2. Pull the network cable through the flex conduit. Please note that the size of the conduit and the gland is big enough to let the RJ-45 connector pass through all the way.

3. Two pieces from the conduit gland set will be attached to flex conduit first.





4. The third piece goes through the back side cover of the camera.



5. The fourth piece (locking nut) is used to lock the gland firmly from the inside of the back side cover.

6. Pull the network cable through the back side cover of the camera.



7. Connect the flex conduit to the back side cover of the camera.



8. Tighten the domed sealing nut.

9. Plug the network cable into the camera's RJ-45 connector before closing the back side of the camera. If you are not using PoE and need an additional power cord then please connect it at this stage, too.



10. Tighten the screws of the back side of the camera properly.



11. Finally, the bullet camera with properly mounted flex conduit as well as with proper outdoor bracket would look like this. The camera is now ready to withstand even the most severe rain storms.

# 2

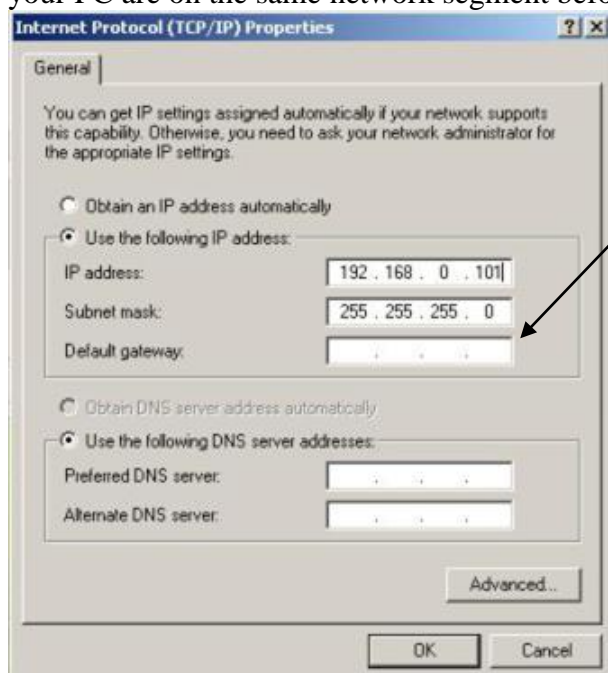
## Quick Tour

This section guides you with a quick tour on this IP device.

### 2.1 Configure this IP Device

#### 2.1.1 Make sure network environment

Default IP of this IP device is 192.168.0.100. Please make sure this IP device and your PC are on the same network segment before running the installation.

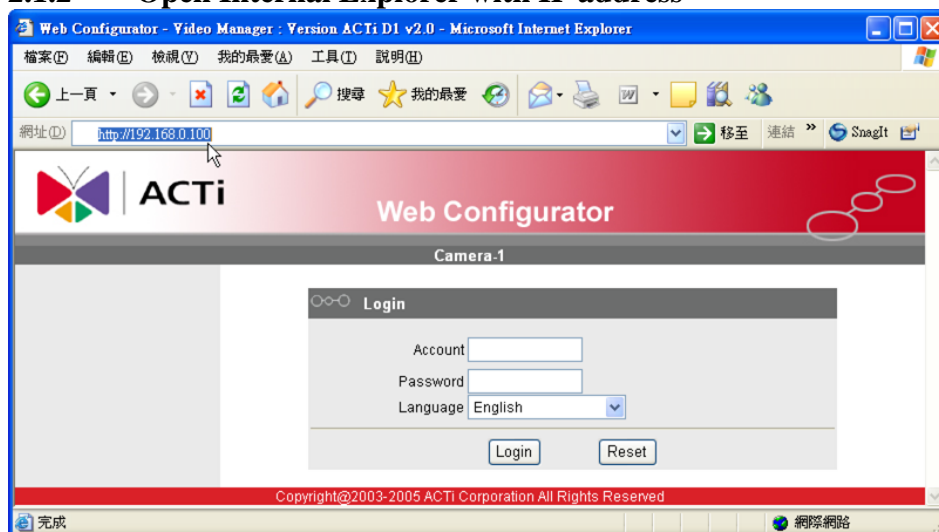


Please set the settings as below.

IP address: 192.168. 0.xxx  
Subnet mask: 255.255.255. 0

(NOTE: xxx should be a number from 1 to 254, but 100 is excepted.)

#### 2.1.2 Open Internal Explorer with IP address





**NOTE:** If your web browser is earlier than IE6, then download IE6 is recommended.



**NOTE:** This IP device default IP address is set to 192.168.0.100

### 2.1.3 Login with default administrator's account & password



**NOTE:** Default administrator account is set to **Admin**, password is set to **123456**, and click **Login** button.

### 2.1.4 Preview the video



## 2.1.5 Set the new IP address

The screenshot shows the ACTi Web Configurator interface for Camera-1. The left sidebar contains navigation options: Video Display, Host Setting, WAN Setting, Date Setting, Video Setting, Video Adjust, User Account, System Info, Firmware, Factory Default, Save Reboot, and Logout. The main content area is divided into three sections:


- WAN Setting \***: Includes radio buttons for Dynamic IP Address (selected) and Static IP Address. Below are input fields for IP Address (192, 168, 0, 100), Subnet Mask (255, 255, 255, 0), and ISP Gateway (192, 168, 0, 254). There are also input fields for User Name and Password under the PPPoE section. Buttons for Apply and Reset are at the bottom.
- DNS Server Setting**: Includes input fields for Primary DNS Server and Secondary DNS Server. Buttons for Apply and Reset are at the bottom.
- DDNS Server Setting**: Includes a dropdown for DDNS Type (Disable), a dropdown for Service ISP (members.dyndns.org), and input fields for Host Name, User Name, and Password. Buttons for Apply and Reset are at the bottom.



Numbered callouts (1-17) point to various elements: 1 (Dynamic IP), 2 (Static IP), 3 (IP Address), 4 (Subnet Mask), 5 (ISP Gateway), 6 (PPPoE), 7 (User Name), 8 (Password), 9 (Apply), 10 (Reset), 11 (Primary DNS), 12 (Secondary DNS), 13 (DDNS Type), 14 (Service ISP), 15 (Host Name), 16 (User Name), 17 (Password).

Copyright@2003-2006 ACTi Corporation All Right Reserved

\***IP Address** : The default IP address is 192.168.0.100.

\***Subnet Mask** : The default subnet mask is 255.255.255.0

\***Click**  button

	<p><b>NOTE:</b> In your Client PC, please make sure the setting of Network Connections Type is set to Auto Negotiation, since this IP device follows MII standard. Otherwise, you might not see the live image.</p>
	<p><b>IMPORTANT:</b> After the IP address is changed, please record this IP address. There's no way to connect to the IP device if user forgets the new IP address.</p>

## 2.1.6 Check Default Video Setting

ACTi Web Configurator

Camera-1

Version V2.0 - Video Setting

Camera Name: Camera-1

Streaming Method: TCP Only

Audio In: Enabled

Multicast IP: 228.5.6.1 (224.3.1.0 ~ 239.255.255.255)

Multicast TTL: 255 (1 ~ 255)

IGMP: Disabled

Analog Video: NTSC

Resolution: N352x240

Bitrate: 1.2M

Frame Rate Mode: Constant

Frame Rate: 30

Serial Port Baud Rate: 9600

Serial Port Control: 8,None,1

Video Control Port: 6001

Video Streaming Port: 6002

Video Multicast Port: 5000

Apply Reset

Copyright@2003-2006 ACTi Corporation All Right Reserved



**NOTE:** Please make sure the TV Input (NTSC / PAL) is meet your requirement, and click **Apply** button.

**2.1.7** Click **Save Reboot** to restore all settings and please wait about 30 seconds for system reboot.