



IP IR D/N PoE Bullet Camera
(with DC 12V / PoE)
ACM-1011 series

Ver. 081208

Quick Installation Guide



www.acti.com

1

Getting Started

1.1 PACKAGE CONTENTS

ACM-1011 series
(DC12V / PoE)



The bracket is not included

Power Adaptor (Option)



Product CD



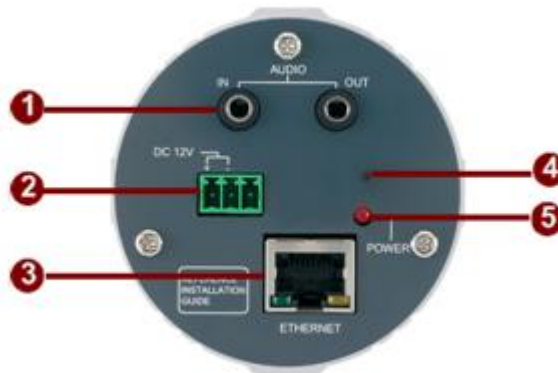
Terminal Block for Power



Warranty Card



1.2 PHYSICAL DESCRIPTION

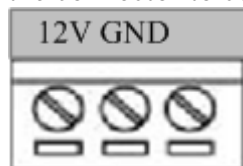


1. Audio Input / Output

The IP IR D/N PoE Bullet Camera supports audio input and output with earphone jack

2. Power Input

If your power input is DC12V. Please follow the description on the connector to connect to power.



PIN	NAME	DESCRIPTION
1	12V	DC Power Input
2	GND	Ground Pin

3. Ethernet Port

The IP IR D/N PoE Bullet Camera connects to the Ethernet via a standard RJ45 connector. Supporting NWAY, this IP IR D/N PoE Bullet Camera can auto detect the speed of local network segment (10Base-T/100Base-TX Ethernet).

4. Reset Button

Step 1: Switch off IP IR D/N PoE Bullet Camera by disconnecting the power cable

Step 2: Press and continue to hold the Reset Button. Reconnect

the power cable while continuing to hold the reset button.

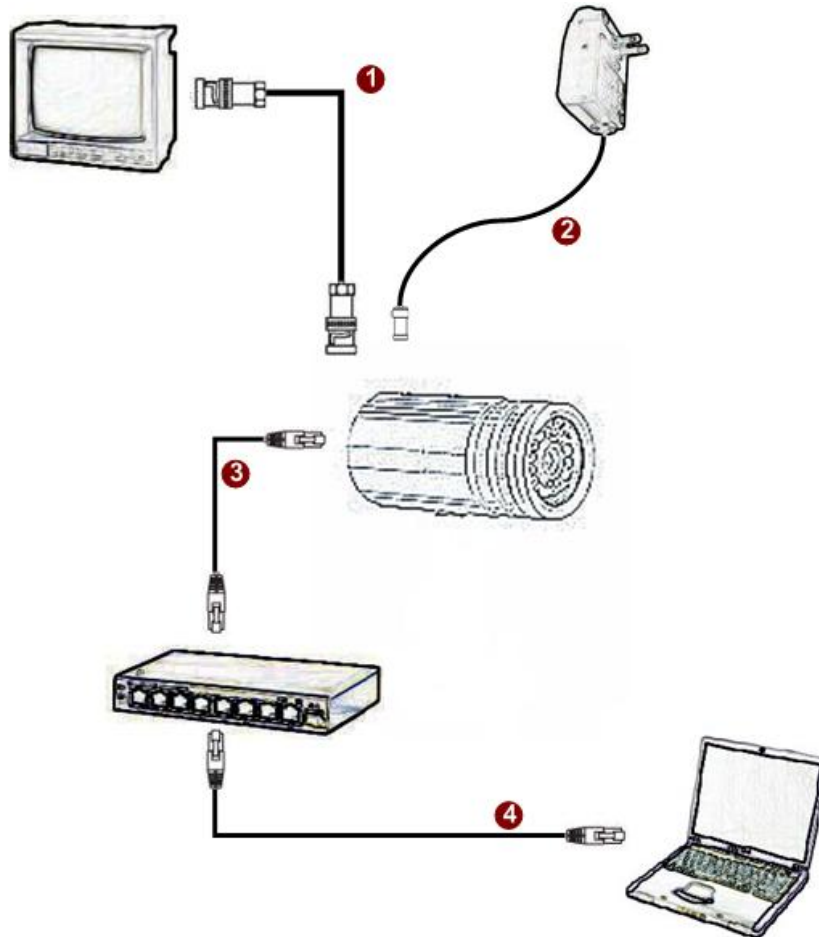
Step 3: Keep holding the reset button depressed for a while, release the reset button. The unit will start up with factory default settings.

5. Power LED Indicator

The LED indicator lights up one time upon power up. It will lights up again when this IP IR D/N PoE Bullet Camera is fully booted up.

1.3 BASIC CONNECTIONS

Follow the procedures below to connect the IP IR D/N PoE Bullet Camera to the respective apparatuses.



1. Connect the power adaptor to IP IR D/N PoE Bullet Camera
2. Connect IP IR D/N PoE Bullet Camera's ethernet port to an Ethernet (RJ45 connectors). If your IP IR D/N PoE Bullet Camera has PoE built-in, you can regard it as a PD and connect it directly to a PSE device like PoE switch.
3. Connect a PC to the Ethernet hub (RJ45 connectors)



NOTE: You may find a support package for help you getting familiar with PoE. Please visit our web site, and get the support document TS-00040.

1.4 Installation Procedure

1.4.1 Install the camera onto bracket



1.4.2 Rotate camera box counter-clockwise to remove camera cover



1.4.3 Adjust the focus / zoom



- Zoom adjust lever

- Focus adjust lever

2

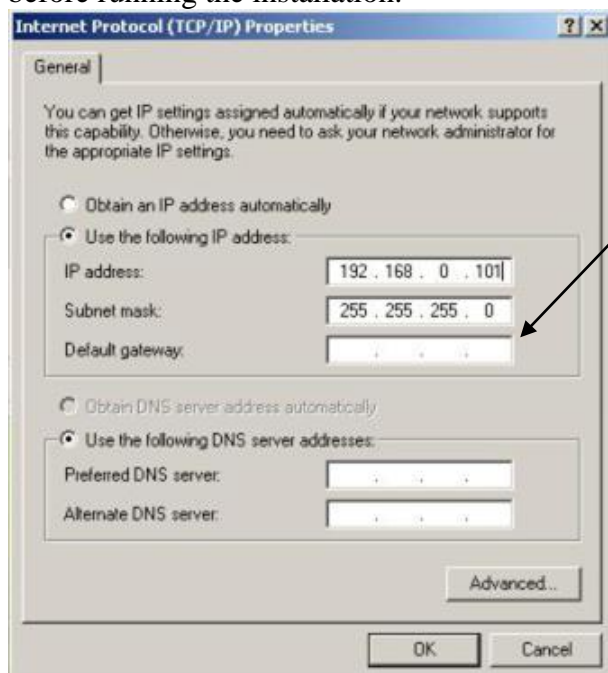
Quick Tour

This section guides you with a quick tour on this IP IR D/N PoE Bullet Camera.

2.1 Configure this IP IR D/N PoE Bullet Camera

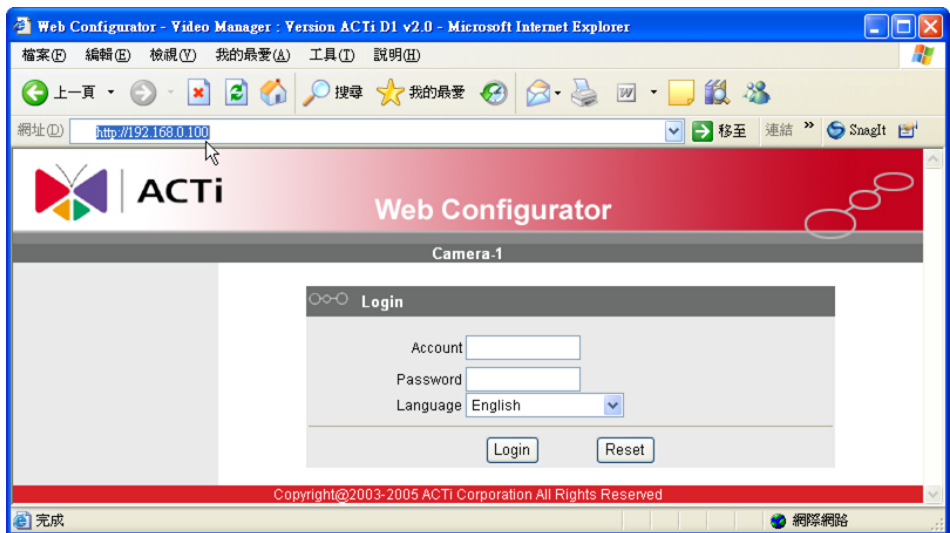
2.1.1 Make sure network environment

Default IP of this IP IR D/N PoE Bullet Camera is 192.168.0.100. Please make sure this IP IR D/N PoE Bullet Camera and your PC are on the same network segment before running the installation.



Please set the settings as below.
IP address: 192.168. 0.xxx
Subnet mask: 255.255.255. 0
(NOTE: xxx should be a number from 1 to 254, but 100 is excepted.)

2.1.2 Open Internal Explorer with IP address

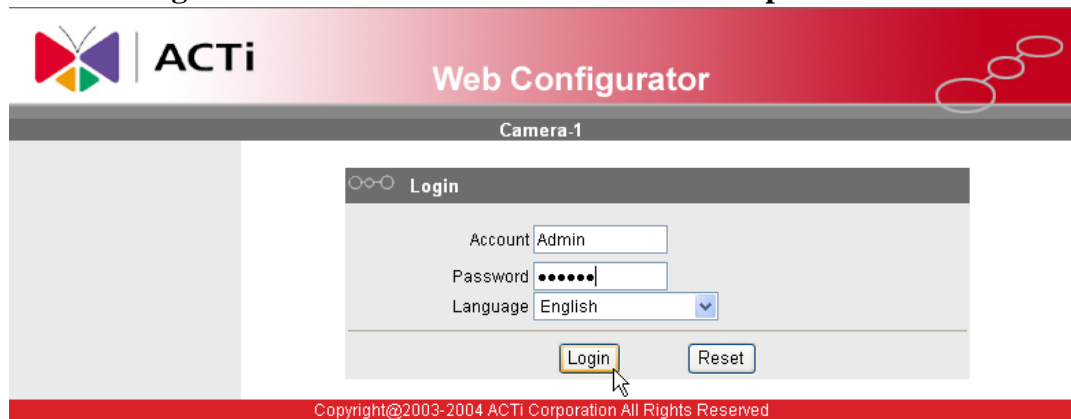



NOTE: If your web browser is earlier than IE6, then download IE6 is recommended.



NOTE: This IP IR D/N PoE Bullet Camera default IP address is set to 192.168.0.100

2.1.3 Login with default administrator's account & password



NOTE: Default administrator account is set to **Admin**, password is set to **123456**, and click  button.

2.1.4 Preview the video



2.1.5 Set the new IP address

The screenshot shows the ACTi Web Configurator interface for 'Camera-1'. The left sidebar contains navigation options: Video Display, Host Setting, WAN Setting, Date Setting, Video Setting, Video Adjust, User Account, System Info, Firmware, Factory Default, Save Reboot, and Logout. The main content area is divided into three sections:



- WAN Setting ***: Includes radio buttons for 'Dynamic IP Address' (1) and 'Static IP Address' (2). The 'Static IP Address' section has input fields for IP Address (192, 168, 0, 100 - 3), Subnet Mask (255, 255, 255, 0 - 4), and ISP Gateway (192, 168, 0, 254 - 5). Below this is the 'PPPoE' section (6) with 'User Name' (7) and 'Password' (8) fields. 'Apply' (9) and 'Reset' (10) buttons are at the bottom.
- DNS Server Setting**: Includes input fields for 'Primary DNS Server' (1) and 'Secondary DNS Server' (2). 'Apply' (9) and 'Reset' (10) buttons are at the bottom.
- DDNS Server Setting**: Includes a 'DDNS Type' dropdown (13) set to 'Disable', a 'Service ISP' dropdown (14) set to 'members.dyndns.org', and input fields for 'Host Name' (15), 'User Name' (16), and 'Password' (17). 'Apply' (9) and 'Reset' (10) buttons are at the bottom.

Copyright@2003-2006 ACTi Corporation All Right Reserved

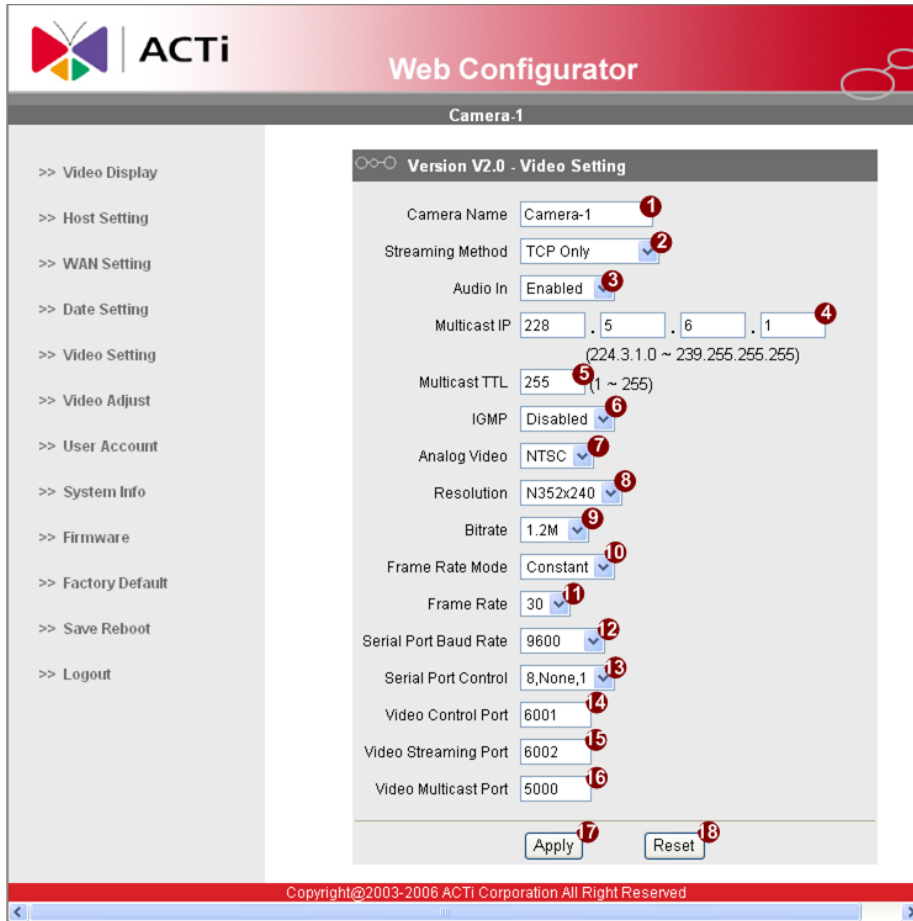
***IP Address** : The default IP address is 192.168.0.100.

***Subnet Mask** : The default subnet mask is 255.255.255.0

***Click**  button

	NOTE: In your Client PC, please make sure the setting of Network Connections Type is set to Auto Negotiation, since this IP IR D/N PoE Bullet Camera follows MII standard. Otherwise, you might not see the live image.
	IMPORTANT: After the IP address is changed, please record this IP address. There's no way to connect to the IP IR D/N PoE Bullet Camera if user forgets the new IP address.

2.1.6 Check Default Video Setting



2.1.7 Click **Save Reboot** to restore all settings and please wait about 30 seconds for system reboot.