



4-channel MPEG-4 Video Encoder

ACD-2000Q/ACD-2000QT

Ver. 090327

Quick Installation Guide



www.acti.com

1

Getting Started

1.1 PACKAGE CONTENTS

ACD-2000Q



Power Adaptor (Option)



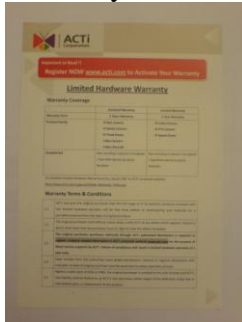
Product CD



Terminal Blocks & Screws



Warranty Card



1.2 PHYSICAL DESCRIPTION

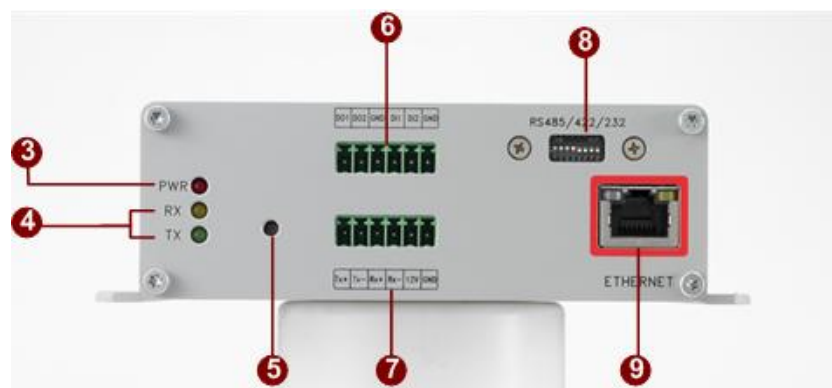


1. Audio Input / Output

The Video Encoder supports one audio input and output with earphone jack

2. CAM1, CAM2, CAM3 and CAM4

Analog Video Input of Composite Signal with BNC Connectors.



3. Action LED Indicator

The LED will light up after Video Encoder has successfully completed the boot process.

4. Serial Port LED Indicator

LEDs indicating when serial port is active.

5. Reset Button

Step 1: Switch off Video Encoder by disconnecting the power cable

Step 2: Using a suitable pointed object, press and continue to hold the Reset Button depressed. While continuing to hold the reset button depressed, reconnect the power cable.

Step 3: Keep holding the reset button depressed around 6 seconds, release the reset button. The unit will start up with factory default settings.

6. Terminal Blocks Pin 1~6

The Video Encoder supports two alarm input and two alarm output. DI: Logic Level 0: 0~0.4V; Logic Level 1: 3.3~30V
DO: Logic Level 0: 0.1~0.6V; Logic Level 1: 2.4~5V
Please find Support package” TS-00045” for details.



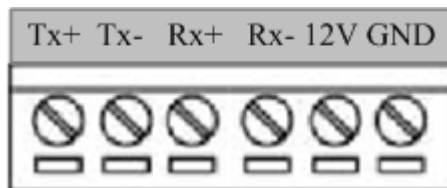
PIN	NAME	DESCRIPTION
1	DO1	Digital Output 1
2	DO2	Digital Output 2
3	GND	Ground Pin
4	DI1	Digital Input 1
5	DI2	Digital Input 2
6	GND	Ground Pin

Please find Support package” TS-00045” for details.

7. Terminal Blocks Pin 7~12

Pin 7~10: RS232/422/485. Default mode is RS-485

Pin 11~12: DC 12V power input



PIN	NAME	DESCRIPTION		
		RS-485	RS-422	RS-232
7	Tx+	D+	Tx+	Tx
8	Tx-	D-	Tx-	
9	Rx+		Rx+	Rx
10	Rx-		Rx-	
11	12V	Power Input (DC +12V)		
12	GND	Ground Pin of Power Input		

8. **Dip Switch for Serial Port**

RS-485 or RS-422 pin define (default is RS-485)



RS-232 pin define

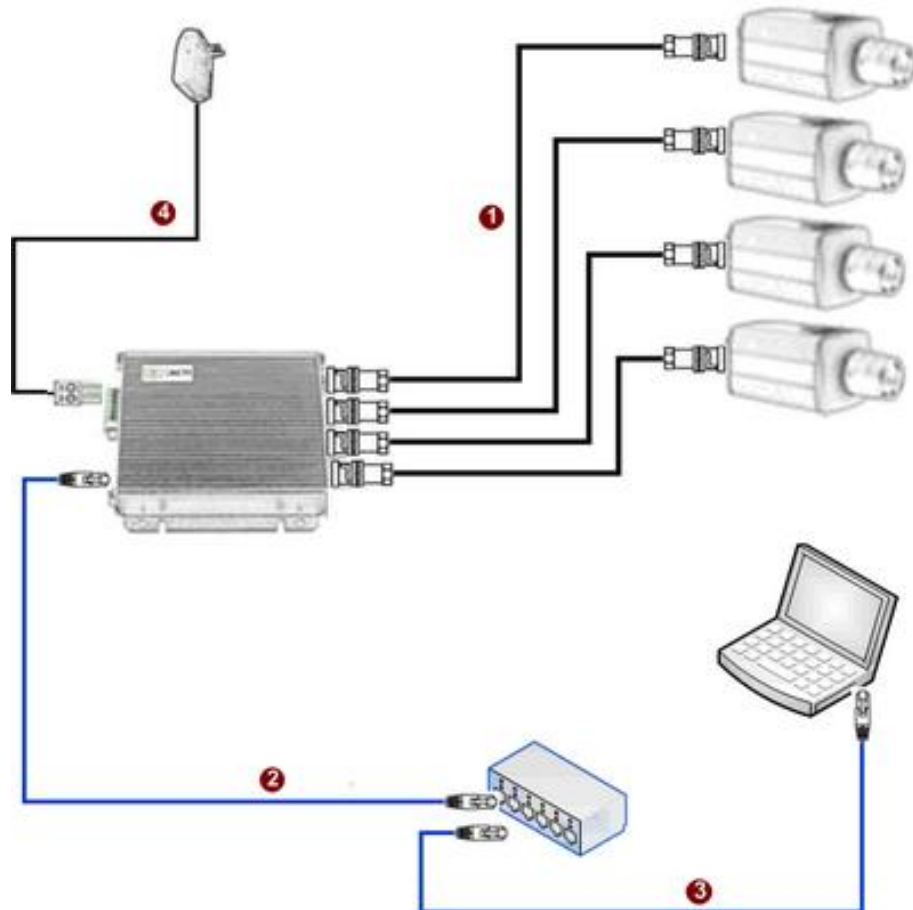


9. **Ethernet Port**

The Video Encoder connects to the Ethernet via a standard RJ45 connector. Supporting NWAY, this IP device can auto detect the speed of local network segment (10Base-T/100Base-TX Ethernet).

1.3 BASIC CONNECTIONS

Follow the procedures below to connect the Video Encoder to the respective apparatuses.



1. Connect an analog video source (e.g. CCD Camera) to the Video Encoder's CAM1 ~ CAM4(BNC connector).
2. Connect the Video Encoder's ethernet port to an Ethernet (RJ45 connectors)
3. Connect a PC to the Ethernet hub (RJ45 connectors)
4. Connect a power adaptor to the Video Encoder (terminal block connector)



NOTE: You may find a support package for help you getting familiar with PoE. Please visit our web site, and get the support document TS-00040.

2

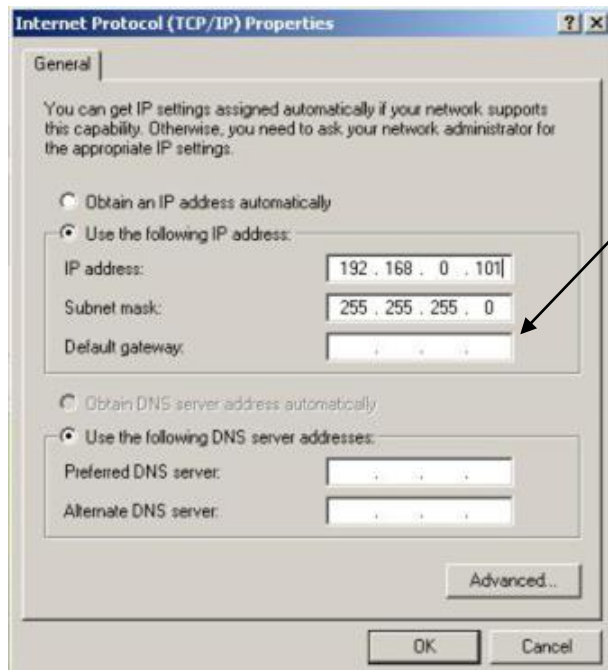
Quick Tour

This section guides you with a quick tour on this IP device.

2.1 Configure this IP Device

2.1.1 Make sure network environment

Default IP of this Video Encoder is 192.168.0.100. Please make sure this Video Encoder and your PC are on the same network segment before running the installation.



Please set the settings as below.

IP address: 192.168.0.xxx
Subnet mask: 255.255.255.0

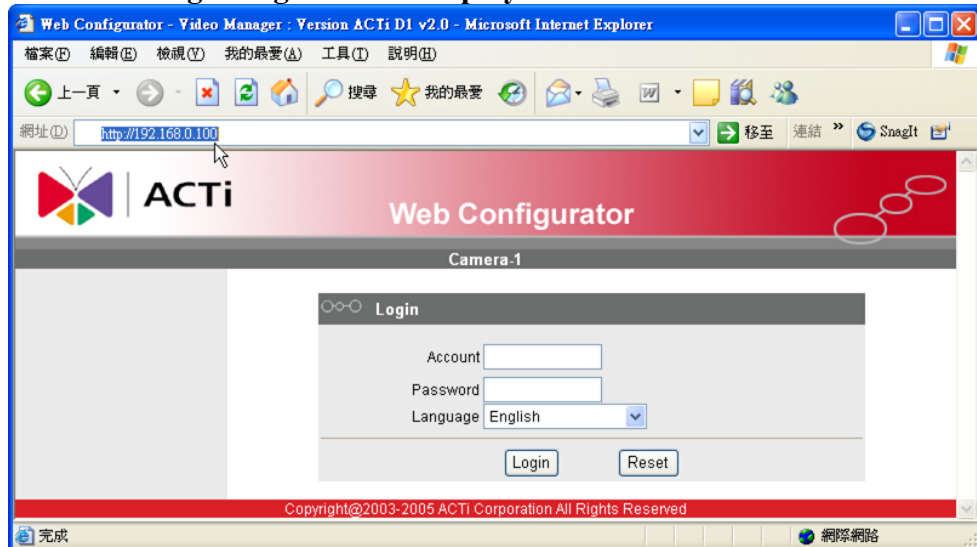
(NOTE: xxx should be a number from 1 to 254, but 100 is excepted.)

2.1.2 Open Internet Explorer with IP address

- **STEP1:** Open a browser
- **STEP2:** Enter the IP address of the Video Encoder.

The default IP address is “192.168.0.100”

The “Login Page” is now displayed as below.



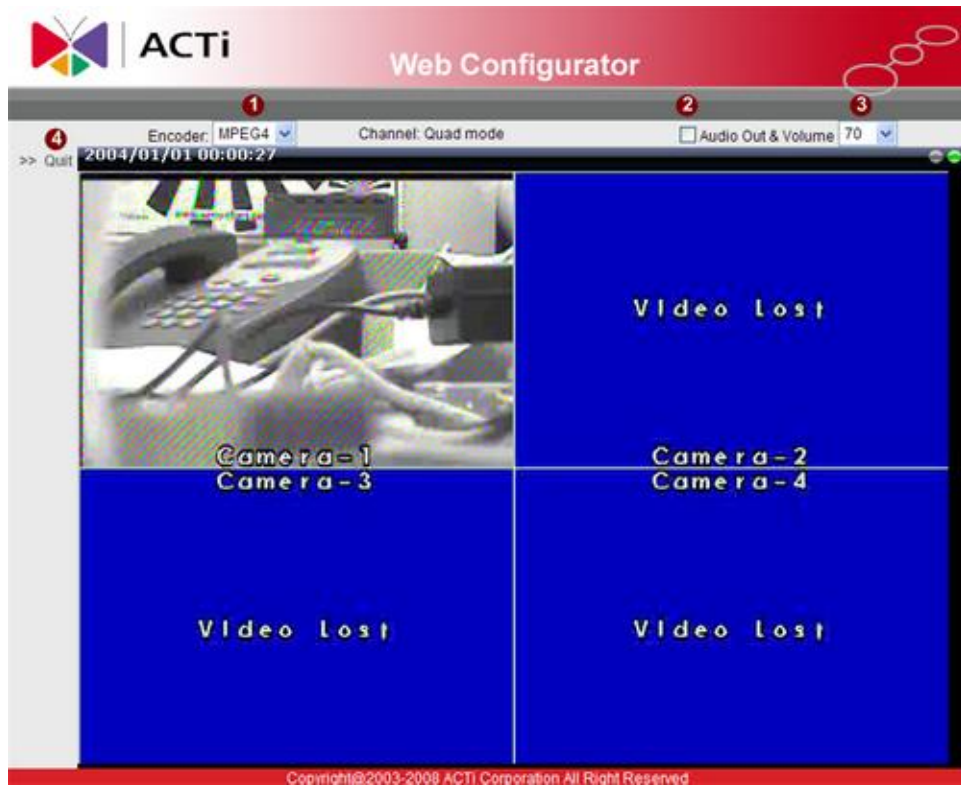
- **STEP3:** Enter the Account name (factory default: admin) and the Password (factory default: 123456).



NOTE: Internet Explorer of 6.0 or above is highly recommended. If you don't have the it, please download it from <http://www.microsoft.com/windows/ie/downloads/default.msp>

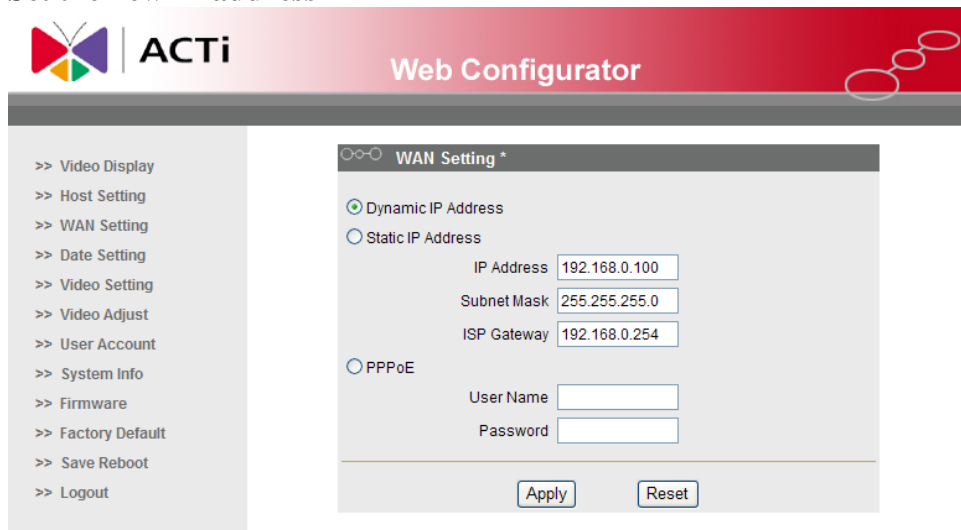
- **STEP4:** Select the language of the Video Encoder user interface. You can select from English, Traditional Chinese, Simplified Chinese, Japanese, Spanish, Italian, German, Portuguese, Czech and French. This user interface setting will disappear once you log out, if you want to change the default user interface language, please change the setting of [Host setting] after login succeeded.
- **STEP5:** Click the **Login** button to login or click the **Reset** button to re-enter again.

2.1.3 Preview the video



- **STEP1:** Click the **1** [Encoder] to choose a compression mode, such as MPEG4, or MJPEG.
- **STEP2:** Click the **2** [Audio Out] checkbox to enable/disable audio output from control PC to IP device.
- **STEP3:** Click the **3** [Volume] to control volume out degree from control PC to IP device.
- **STEP4:** Click the **4** [Quit] to exit the live view and return to “Main Setup page”.

2.1.4 Set the new IP address





The screenshot shows the ACTi Web Configurator interface. The top header includes the ACTi logo and the title 'Web Configurator'. A navigation menu on the left lists various settings: Video Display, Host Setting, WAN Setting, Date Setting, Video Setting, Video Adjust, User Account, System Info, Firmware, Factory Default, Save Reboot, and Logout. The main content area is titled 'WAN Setting *' and features three radio button options: 'Dynamic IP Address' (selected), 'Static IP Address', and 'PPPoE'. Under 'Dynamic IP Address', there are three input fields: 'IP Address' with the value '192.168.0.100', 'Subnet Mask' with '255.255.255.0', and 'ISP Gateway' with '192.168.0.254'. Under 'PPPoE', there are two empty input fields for 'User Name' and 'Password'. At the bottom of the form are two buttons: 'Apply' and 'Reset'.

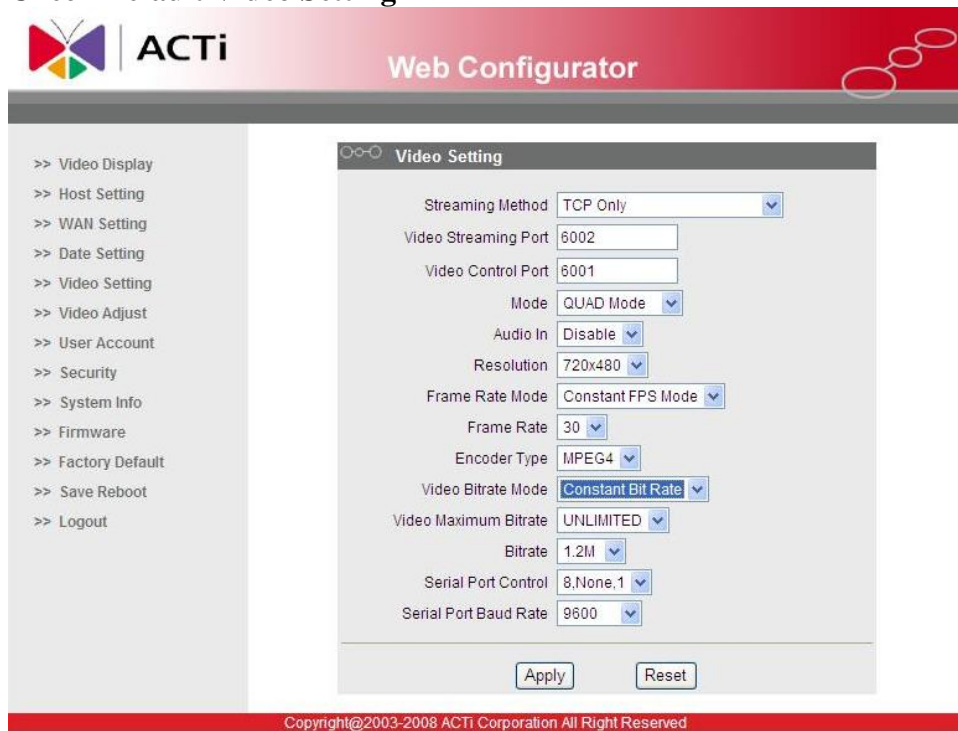
***IP Address** : The default IP address is 192.168.0.100.

***Subnet Mask** : The default subnet mask is 255.255.255.0

***Click**  button

	NOTE: In your Client PC, please make sure the setting of Network Connections Type is set to Auto Negotiation, since this IP device follows MII standard. Otherwise, you might not see the live image.
	IMPORTANT: After the IP address is changed, please record this IP address. There's no way to connect to the IP device if user forgets the new IP address.

2.1.5 Check Default Video Setting



The screenshot shows the ACTi Web Configurator interface. At the top, there is a red header with the ACTi logo and the text "Web Configurator". Below the header is a navigation menu on the left with the following items: >> Video Display, >> Host Setting, >> WAN Setting, >> Date Setting, >> Video Setting (highlighted), >> Video Adjust, >> User Account, >> Security, >> System Info, >> Firmware, >> Factory Default, >> Save Reboot, and >> Logout. The main content area displays the "Video Setting" configuration page. The settings are as follows:

Setting	Value
Streaming Method	TCP Only
Video Streaming Port	6002
Video Control Port	6001
Mode	QUAD Mode
Audio In	Disable
Resolution	720x480
Frame Rate Mode	Constant FPS Mode
Frame Rate	30
Encoder Type	MPEG4
Video Bitrate Mode	Constant Bit Rate
Video Maximum Bitrate	UNLIMITED
Bitrate	1.2M
Serial Port Control	8,None,1
Serial Port Baud Rate	9600

At the bottom of the configuration area, there are two buttons: "Apply" and "Reset". Below the configuration area, a red footer contains the text "Copyright@2003-2008 ACTi Corporation All Right Reserved".

2.1.6 Click **Save Reboot** to save all settings and please wait about 30 seconds for system reboot.